

Alabama FCS Newsletter

August 19, 2024



Alabama Family and Consumer Sciences Newsletter



2024-25 Alabama FCS Directory

With so many moves and new faces, it's time to update our directory. Please complete the survey even if you haven't changed schools. You can scan the QR code or click [here](#) to complete the survey.

FCS Teacher Directory Information
2024-25



Summer Conference Session Request

One of our summer professional development presenters would like to connect with the participants in her session. If you attended the "**Sew Lovely Projects to Inspire You and Your**

New Teaching Assignments

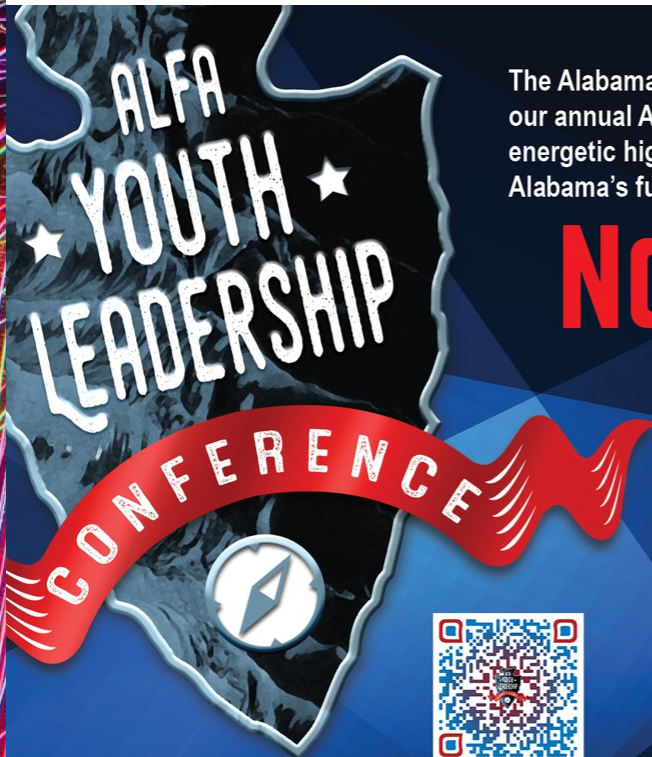
New Teachers:

Latricia Arnold, Macon County CTC
Tasha Breland, Auburn High School
Colleen Butler, West Limestone
Lindsay Collins, Beulah High School
Jerrica Copeland, Andalusia High School
Anna Kerri Davis, Dadeville High School, new program!
Delana Donnell, Robertsdale High School
Makenzie Easley, Saraland High School
Briar Fowler, Appalachian High School
Anna Freeman, Mary G Montgomery
Michelle Gentry, Boaz High School, new teaching unit!
Allison Gibbs, Boaz Middle School
Aneesa Hamilton, Decatur High School
Courtne Harper, Demopolis High School
Brianna Henson, North Sand Mountain
Autumn Hillier, Baker High School
Madison Johnson, Elba High School
Megan Johnson, Opelika High School
Jessica Kendrick, Northside High School-Tuscaloosa
Janice Kidd, Chickasaw High School, new program!
Claire Maceina, Fairhope High School
AnnMarie McCondichie, North Jefferson Middle School
Abby McGinnis, Saraland Middle School
Tywana McGrew, Choctaw County High School
Amie Fain Miller, Geneva Career Tech Center
Kim Patterson, Rogers High School
Jonathan Raspberry, Spanish Fort High School
Madeline Rogers, Jacksonville High School
Adrianna Rowell, Reeltown High School
Jordan Shelton, Russellville High School
Cindy Smith, DeKalb County Tech Center, new program!
Kristen Stallings, Chelsea Middle School
Amanda Stewart, Charles Henderson High School
Malaysia Thornton-Jackson, Vigor High School
Jordon Tidwell, Austin High School
Amanda Tranum, Hubbertville High School
Council Turner III, Chambers County Career Tech Center
Tasha Vick, Carbon Hill High School

Movers and Shakers:

Leigh Ann Arnold: from Valley Head High School to Collinsville High School
Katherine Graves: from Brooks High School to Central High School Florence
Tabitha Malone: Austin Jr. High School
Kim Patterson: from Saraland Middle to Rogers High School
April Shrader: from Sparkman High School to Valley Head High School

If you know of any other new teachers or teachers that have moved to a difference school, please email theresa.long@alsde.edu.



The Alabama Farmers Federation is excited to focus on the future during our annual Alfa Youth Leadership Conference. We're looking for driven, energetic high school freshmen and sophomores — the key to unlocking Alabama's future success. Can you help?

NOV. 4-5, 2024

After the free, two-day training at the Alabama 4-H Center in Columbiana, students should be prepared to:

- ✓ Advocate for agriculture
- ✓ Identify their potential to better serve communities
- ✓ Step into leadership roles

The conference includes:

- ✓ High-energy workshops
- ✓ Motivational speakers
- ✓ Outdoor activities and games
- ✓ Relationship-building with leaders across the state

You can help by forwarding application information to your colleagues, friends and family members.

To apply, visit AlfaFarmers.org.
Application deadline: Sept. 16

Questions?

Contact the Federation's Hunter McBryer at (334) 612-5610.

FCCLA members have been invited to attend!

The Alabama Farmers Federation is excited to focus on the future during our annual [Alfa Youth Leadership Conference](#) **November 4-5**. We're looking for driven, energetic high school freshmen and sophomores — the key to unlocking Alabama's future success. Applications are now open! After the free, two-day training at the Alabama 4-H Center in Columbiana, students should be prepared to:

- * Advocate for agriculture
- * Identify their potential to better serve communities
- * Step into leadership roles

The conference includes:

- * High-energy workshops
- * Motivational speakers
- * Outdoor activities and games
- * Relationship-building and networking opportunities with leaders across the state

To learn more, read our [Neighbor's article highlighting last year's conference](#), and check out the [application here](#) or at AlfaFarmers.org. Applications will be accepted through September 16th. ****Applicants who are accepted will receive confirmation on October 4th via email. When applying, please provide an email that is checked often. The email will contain a medical release form, conduct agreement, camper checklist, agenda and general information. Medical release form and conduct agreement must be signed, scanned and emailed to amonk@alfafarmers.org by October 11th****

Application Link: [EmailMe Form - Alabama Youth Leadership Conference](#)

Neighbor's Magazine Link: [Neighbor's article highlighting last year's conference](#)

YouTube Link- [Information on the Alfa YLC Service Project 2023](#)

You can help by forwarding application information to your colleagues, friends and family members. Questions? Contact the Federation's Hunter McBrayer @ 334-612-5610.

Hunter McBrayer

Director- Young Farmers Division

Alabama Farmers Federation

(334) 612-5610

New Updates using CANVA

Discover how the new "Sort Stickies" feature can help you organize your ideas effortlessly. But wait...there's more! After you sort your stickies, "Transform to Doc" and then "Transform to Presentation" and let this new workflow blow your mind. We also cover how to link and embed other Canva files more efficiently, and the new "Translate Templates" feature that breaks language barriers.

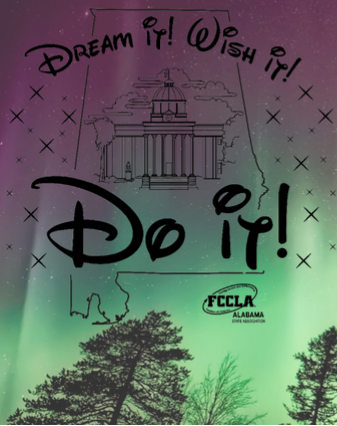
Don't miss out on the exciting "Animated Bar Charts" for dynamic data presentation and the "Graduated Student Export" option, which is perfect for students to take their work with them (similar to Google Takeout). [This podcast episode is available as a YouTube video](#), so you can see the demo of the new features on the screen or listen to the traditional audio podcast. (Both are available below.)

Tune in to stay ahead with these game-changing Canva updates!

Judy Eldred, Opelika, Honored with Award

2024 Green Award

The 2024 Green Award will be offered to individuals/ culinary programs that emphasize sustainability or other "green" aspects in their programs. This Award is sponsored by the [United Soybean Board](#), which is proud to reach out to educators and recognize their efforts to instruct their students on the importance of agriculture when selecting products and designing menus. Our own Judy Eldred, culinary instructor at Opelika High School, received the runner-up award for this national honor.



HUMAN SERVICES

EARLY CHILDHOOD
DEVELOPMENT SERVICES

CONSUMER SERVICES

FAMILY STUDIES AND COMMUNITY
SERVICES

FOOD, WELLNESS AND DIETETICS

Incorporating Science and Math into your Curriculum

[Drink Your Poison](#)

Illustrating sodium and sugar levels in students' beverages is eye-opening when discussing healthy beverage options.

By Dr. Jennifer Denlinger, CCC, CHEP

There are many personal choices that come with discussing an individual's health and nutrition. To get my point across, I use examples of beverages my students consume in class to see what is healthy and what they think is healthy.

I provide a visual representation of what they are consuming. Most of the time, students do not know how much sugar or sodium is in an item they drink. This is a fun game to play.

I use the bottles and cans students deposited after class in the recycle bin to set up the activity. After washing the bottles and cans I collected very, very well, I have the students guess which drink is the healthiest. They then practice their nutritional calculations to understand the nutritional numbers associated with each drink. The next step is they see how much sugar, sodium and other nutrients are in each item.

Based on their calculations, they pour the same amount of sugar, sodium and fiber (I illustrate this using dried beans) into containers sitting next to each beverage. I then ask the students if their opinions on the healthiest drinks were correct. I find this to be a very eye-opening activity for the students and myself. I award participation points since it is a group activity, however it can be graded based on their nutritional calculations and justifications of healthy.

I keep the clean bottles and cans and make an answer key with the selections of beverages in case help is needed when making calculations. And here's a side note: It is shocking to see what is

in some of these drinks!



Drink_your_poison.pdf

Download

110.2 KB



Drink_your_poison_set_up.pdf

Download

58.9 KB

FASHION

VISUAL DESIGN

INTERIOR DESIGN



Incorporating Science into Fashion Design

Unveiling the Intersection of Fashion and Science: Where Style Meets Scientific Discovery

Sylvia from WordifyScience. Fashion and science are often perceived as distinct realms, seemingly unrelated in their objectives and methodologies. However, upon closer examination, we discover that the two fields share a fascinating interplay, with fashion drawing inspiration from science and science finding new frontiers through fashion. In this blog post, we embark on a captivating journey to explore the unexpected presence of fashion in science and shed light on the intriguing relationship between these seemingly disparate domains.

[Full Post](#)



HOSPITALITY AND TOURISM

FOOD AND BEVERAGE SERVICES

LODGING

SPORTS, RECREATION AND ATTRACTIONS

TRAVEL AND TOURISM

Teacher ServSafe Certification/Recertification



The Alabama Restaurant and Hospitality Alliance is once again offering ServSafe credentialing free of charge for FCS teachers. For more information contact melissa@arhaonline.com or complete this [form](#).

SERVSAFE FOOD MANAGER CERTIFICATION

ALABAMA


6/24	ORANGE BEACH	8/12	GADSDEN
6/24	MONTGOMERY - SPANISH	8/19	ORANGE BEACH
7/1	BIRMINGHAM	8/19	OPELIKA
7/2	TUSCALOOSA	8/20	DOTHAN
7/8	SPANISH FORT	8/20	TRUSSVILLE
7/8	MOBILE	8/21	TUSCALOOSA
7/15	PRATTVILLE	8/27	HUNTSVILLE
7/16	DOTHAN	9/4	PRATTVILLE
7/16	TRUSSVILLE	9/4	BIRMINGHAM
7/16	GADSDEN	9/16	OPELIKA
7/17	OPELIKA	9/17	DOTHAN
7/22	ORANGE BEACH	9/17	TRUSSVILLE
7/22	BIRMINGHAM - SPANISH	9/18	MOBILE
7/23	MOBILE	9/18	TUSCALOOSA
7/23	MONTGOMERY (SPANISH)	9/24	HUNTSVILLE
8/1	DECATUR	9/30	SPANISH FORT
8/5	SPANISH FORT	10/15	DOTHAN
8/5	MONTGOMERY	11/19	DOTHAN
8/5	BIRMINGHAM	12/17	DOTHAN
8/12	MOBILE		



**REGISTER TODAY TO RECEIVE
ARHA'S EXCLUSIVE DISCOUNT!
PROMO CODE: ARHA**

855-857-SAFE (7233)
WWW.TSCASSOCIATES.COM



ALABAMA RESTAURANT &
HOSPITALITY ALLIANCE

2024-25 ushers in the new Course of Study for all Hospitality and Tourism Programs. Be sure to use the new courses and course standards.

[Course of Study](#)

[Food and Beverage Services Equipment List](#)

[Lodging Equipment List](#)

[Sports, Recreation and Attractions Management Equipment List](#)

[Travel and Tourism Equipment List](#)



Hospitality and Tourism Program Guide 24-25.pdf

[Download](#)
315.5 KB

Center for Advancement of FoodService Education (CAFE) Podcasts

CAFÉ Mission: “To link the foodservice industry with the foodservice classroom.” This is exactly what CAFÉ Talks Podcast strives to accomplish. Through nearly 90 interviews with some of the most influential people in education, culinary classrooms, the foodservice industry, leadership, innovation, culinary history, and management – there is something for everyone to relish and use. The chart attached demonstrates where each interview might apply in your classrooms as assignments or a point of reference for faculty. All podcasts can be accessed through the CAFÉ website at: www.cafemeetingplace.com or wherever you turn to listen to podcasts such as iTunes and Spotify.



CAFE Talks Podcasts - Organized.pdf

[Download](#)
124.0 KB

AHLEI and NRA Pricing List

Attached below is the current pricing list for textbooks and cri's from both AHLEI and NRA. FYI: There may be price changes coming in October.



ALABAMA Product Price List 4-2024 (2).xlsx

[Download](#)
16.4 KB



2025 FCCLA Culinary STAR Events

FCCLA Culinary Arts and Baking and Pastry Arts Competition has been set!

February 7-8, 2025

(Weather date February 21-22)

Jefferson State Community College Hospitality Institute

EARLY CHILDHOOD EDUCATION

EDUCATORS IN TRAINING

EDUCATION AND TRAINING



Education and Training Course of Study

2024-25 ushers in the new Course of Study for Education and Training. Be sure you are using the new courses.

[Course of Study](#)

[Early Childhood Education Equipment List](#)

[Educators in Training Equipment List](#)



Education and Training Program Guide 24-25.pdf

[Download](#)

270.9 KB

FTA Grant Application

The 2024-25 FTA Grant Application is now open. The grant will award \$1000 in a teacher stipend and a \$500 grant for classroom supplies. A maximum of 166 grants will be awarded. The deadline to submit the grant application is Tuesday, September 17, 2024 at 4:30 pm. Grant applications will be completed online this year. Please see the link below for the application and more detailed information.



Future Teachers of Alabama MEMO (FTA) Program Director Stipend Grant.pdf

[Download](#)
206.5 KB



FCCLA UPDATES

2024-25 Alabama FCCLA State Theme



Alabama National Fair Booths



Each year FCCLA has the opportunity to showcase 6 chapters at the ANF. If interested, complete the form below.

Responsibilities:

- Travel to Montgomery to set up booth between Sept. 30-Oct 3 by 2 pm.
 - Judging will be Friday, Oct 4.
 - Travel back to Montgomery to take down booth October 15th after 8 am thru October 16th by 3 pm.
- Decorate booth to highlight FCCLA by either this year's theme "Dream It, Wish It, Do It," national or state project or FCCLA/FCS integration.

Chapters may win cash prizes based on placing. Every group will receive \$200 for travel expenses.

1st place: \$550

2nd place: \$450

3rd place: \$350

4th place: \$250

Applications due August 30. Six chapters will be chosen from applicants to represent Alabama FCCLA. See more information by accessing the QR code to the left.

Affiliation Help

Great news, affiliation rates stay the same for the 4th year!

Alabama FCCLA Affiliation Rates 2024-25

Regular Membership: 12 minimum:
\$9 National + \$6 State = \$15 total
Advisers, national rate only

Up to 25 Package:
National \$395 + State \$125 = \$520

- 25 student member national and state affiliations
- Unlimited chapter adviser national affiliations in one chapter (this will only apply to chapters advisers in which the enrolled chapter is their primary chapter)
- One (1) Adviser Academy Registration
- One (1) National Program of your choice (electronic version)
- One (1) Lifetime Alumni & Associates membership for any one of their choice

**Student members in excess of 25 will be charged the \$9 national affiliation rate plus the state affiliation rate.

Unlimited Members Package

National \$775 + \$500 State = 1275

- Unlimited student member national and state affiliations in one chapter
- Unlimited chapter adviser national affiliations in one chapter (this will only apply to chapter advisers in which the enrolled chapter is their primary chapter)
- One (1) Adviser Academy Registration
- One (1) National Program of your choice (electronic version)
- One (1) Lifetime Alumni & Associates membership for any one of their choice

Middle School Unlimited Membership

National \$250 + State \$250 = \$500

- Adviser pays National dues only \$9



2024-2025 Step-By-Step Affiliation Instructions.pdf

Download

906.8 KB

Membership Information Form

Entering each student's name by hand can be very time consuming. Below are links to a Microsoft form and a Google Form that will help with information about your members. **Be sure to make a copy of the form so you are the owner. Once you have your own copy, you can send the link to your members to complete. Data will come to you in a csv or excel document that can then be uploaded into your affiliation portal.** Otherwise, your information will come to Theresa instead of to you. And she doesn't need it :)

[Microsoft Membership Information Form](#)

[Google Membership Information Form](#)

Fundraiser Opportunities

We Help Two Sock Fundraiser

Through the Wel Hel Two Student Sponsorship Program, FCCLA members can provide a child with the ability to attend a high-quality private school in Uganda while raising funds for their chapter. See the attached flyer below for more information.

And remember.....SOCKTOBERFEST is coming soon!



WeHelpTwo.pdf

[Download](#)

501.1 KB

Funds for Orgs Shoe Fundraiser

How it Works

The best part about this fundraising opportunity is that it's completely FREE for chapters and members. Funds2Orgs provides all the necessary resources for a successful campaign. Here's how it works:

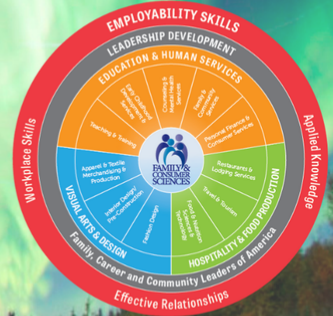
1. Sign up below to receive more information and schedule a conversation with the Funds2Orgs team to discuss when you'd like to kick off your drive.
2. Funds2Orgs fundraising coaches will guide you through the entire shoe drive fundraiser, ensuring your chapter's success.
3. Following a planning call, you'll receive a Welcome Kit packed with collection materials, marketing templates, and more to jumpstart your campaign.
4. Customize your promotion materials and social media posts with the support of Funds2Orgs to create an engaging and impactful outreach.
5. Collect gently worn, used, and new shoes from your school and community, generating momentum for your cause.
6. Once Funds2Orgs picks up the shoes, you can expect to receive a check within two days of receipt and processing!

Join us in this incredible fundraising journey with Funds2Orgs and make a meaningful difference while raising funds for your chapter. Together, we can create a brighter future for communities around the world.

[Click here to sign up!](#)



Professional Development Opportunities



2025 WindowsWear National Teacher Professional Development Conference

The Business of Culinary (June 10–11) and Fashion Immersion (June 12–13, 2025)

The conference is tailored for design, family & consumer science, culinary, fashion, design, marketing, merchandising, textile educators who are looking to take their curriculums to the next level with creativity, design-thinking, & technology! The content is also aligned with FCS standards and competencies as well as curriculum development related to the business of culinary, retail, fashion, design, and more.

2025 Agenda *

The Business of Culinary

Tuesday, June 10th

- ✓ New York City culinary history
- ✓ Behind-the-scenes of a classic New York City staple food
- ✓ Culinary tour of an ethnic neighborhood
- ✓ Unique restaurant experience

Wednesday, June 11th

- ✓ Culinary Arts Professional Development discussion
- ✓ Hunts Point Market, the world's largest wholesale food distribution center

Fashion Immersion

Thursday, June 12th

- ✓ New York City fashion history
- ✓ Headquarters of a New York City fashion brand
- ✓ Showroom visit of an emerging brand or Garment Center manufacturing facility
- ✓ Textile & fabric experience at Mood Fabrics

Optional Thursday Evening Excursion: Walking tour of Fifth Avenue including Macy's, Saks Fifth Avenue, Tiffany & Co., and Bergdorf Goodman.

Friday, June 13th

- ✓ Fashion & Design Professional Development discussion
- ✓ Meatpacking District and SoHo fashion tour
- ✓ MET Museum and 2025 Costume Institute exhibition

Conference takes place from 10am to 5pm each day and includes programming, presentations, site visits, and experiences.

All attendees are welcome to attend the WindowsWear 2025 Summer Bash taking place on the evening of Wednesday, June 11th.

** Agenda may be subject to change.*

Location

Midtown Manhattan and various site visits throughout New York City and includes a reception on Wednesday night. The evenings free for you to explore on your own or with other educators that will be attending the conference.

[Register for the 2025 National Teacher Professional Development Conference in New York City! – WindowsWear](#)

WindowsWear FCS Professional Development Symposium



**Alabama Association of
Family and Consumer
Sciences**



Brittany Riddle, President
For more information, contact
Brittany @
briddle@wscsclass.com



**American Association of
Family and Consumer
Sciences**

Just a reminder that [Theresa](#) and [Kayla](#) are available for technical assistance visits to your school, phone or virtual platforms.



Alabama Family and Consumer Sciences and FCCLA

Instagram: [@alafccla](#)

Email: fccla@alsde.edu

Website: [Alabama State Department of Education - Alabama](#)

[Achieves - ALSDE](#)

[Home - Alabama FCCLA](#)

Location: [50 North Ripley Street, Montgomery, AL, USA](#)

Phone: 334-694-4750

Facebook: <https://www.facebook.com/ALAFCCLA/>

Instagram: [@alafccla](#)



Alabama FCS/FCCLA

Alabama is using Smore to create beautiful newsletters

