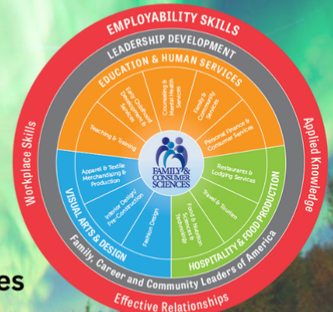


# Alabama FCS Newsletter

September 30, 2024

## Table of Contents

- Section 1: General FCS Information
- Section 2: Human Services
- Section 3: Visual Design
- Section 4: Hospitality and Tourism
- Section 5: Education and Training
- Section 6: FCCLA Updates
- Section 7: Professional Development Opportunities
- Section 8: Contact Us



## 2024-25 Alabama FCS Directory

With so many moves and new faces, it's time to update our directory. Please complete the survey even if you haven't changed schools. You can scan the QR code or click [here](#) to complete the survey. We only have 109 responses out of almost 400 teachers. If you have not completed it yet, please do so.

FCS Teacher Directory Information  
2024-25



## FCCLA State Project

Alabama FCCLA is excited to kick off our State Service Project for this year! We will be fundraising for Make-A-Wish and working to grant a Wish Kid's wish. Our fundraising goal is \$10,000. We can



easily meet and exceed this if every chapter raises at least \$100. This ensures that Alabama FCCLA will be able to sponsor a full wish. However, please do not limit yourselves to just this amount as every dollar raised benefits a wish child. Fundraising efforts will be tracked through Make-A-Wish's Wish Your Way site. People can

donate directly through your chapter's Wish Your Way page or your chapter members may collect offline donations by cash or check.



**Make-A-Wish Sign Up Instructions.pdf**

Download

42.1 KB

---

## Alabama FCS/FCCLA SLACK Group

Alabama FCCLA now has a slack channel. We are aware that many systems block mass emails, including the newsletter and ALSDE. In an effort to be able to get as much information out to you as possible, we have created a SLACK. If you have never used SLACK, it is a great messaging tool that allows attachments that will not clog up your email or be blocked due to the size. It is accessible on your computer as well as smart phone. To join, go to

[https://join.slack.com/t/alabamafccla/shared\\_invite/zt-2pics65zo-yO~baIK\\_a8vA8Suhvf4z\\_g](https://join.slack.com/t/alabamafccla/shared_invite/zt-2pics65zo-yO~baIK_a8vA8Suhvf4z_g). If you have any questions with signing

up, please reach out to [hello@alabamactso.org](mailto:hello@alabamactso.org) for technical assistance. Please also see the attachment with more information. All Alabama FCS teachers are encouraged to join the group.



**Alabama FCCLA Welcome to SLACK v2 (1).pdf**

Download

123.4 KB

---

## Farm to Table Catfish Professional Development

Alabama FCCLA and Alabama Farmers Federation have teamed up to sponsor a Catfish Farm to Table professional development for Alabama Family and Consumer Sciences teachers, October 24, 2024, in Greensboro, AL.

Workshops include:

- Tour a catfish farm
- Introduction to the Alabama Fish Farming Center and Fried Catfish Lunch
- Catfish Cooking Demonstration with Stacey Little of Southern Bites.



FYI: Catfish will be the protein for the FCCLA Culinary STAR Event!

[Registration](#) is only \$10 and is open to the first 50 registrants.



**Farm to Table Catfish PD Flyer.pdf**

[Download](#)

3.4 MB



## HUMAN SERVICES

EARLY CHILDHOOD  
DEVELOPMENT SERVICES

CONSUMER SERVICES

FAMILY STUDIES AND COMMUNITY  
SERVICES

FOOD, WELLNESS AND DIETETICS

## New Personal Finance STAR Event and Curriculum

FCCLA and EverFi have joined forces to create a new STAR Event for Personal Finance. The event uses the **FREE** Everfi modules to teach financial literacy while the member works through the STAR Event creating a financial portfolio.

- Unlimited student accounts
- Different modules for different levels
- Great for integrating FCCLA into the classroom, especially if you are teaching Personal Finance or in the Consumer Services Program!

Other available modules include but not limited to:

- Digital Wellness and Safety
- Bullying Prevention
- Mental Wellness

- Vaping
- College and Career Readiness



**EVERFI-K-12-Course-Catalog.pdf**

[Download](#)

10.2 MB



**EVERFI-K-12-Overview.pdf**

[Download](#)

2.7 MB



**Personal Finance Presented by EVERFI.pdf**

[Download](#)

422.2 KB

---

## Food Science Toolbox

Incorporating science into your curriculum may not be as hard as you think. Check out the Food Science Toolbox created by Dr. Courtney Simons, food scientist and educator. Free and for-purchase products available.

[Food Science Toolbox is Delivering high-quality food science education and training. \(buymeacoffee.com\).](http://buymeacoffee.com)



**093336\_Documenting\_Investigating\_and\_Reporting\_Foodborne\_Illnesses.pdf**

[Download](#)

452.4 KB



**093346\_Quiz.pdf**

[Download](#)

199.4 KB

---



FASHION

INTERIOR DESIGN

# VISUAL DESIGN



## One Year Teacher License for Chief Architect

Chief Architect Design is offering a free one-year teacher trial to their software for interior design teachers. You must use an education-based email. To request an account, please email [Chief-Architect@chiefarchitect.com](mailto:Chief-Architect@chiefarchitect.com)



# HOSPITALITY AND TOURISM

FOOD AND BEVERAGE SERVICES

LODGING

SPORTS, RECREATION AND  
ATTRACTIONS

TRAVEL AND TOURISM

## The ABCs of Latino Cooking: Recipes and Food History That Celebrate Latino Cultures

Are you teaching the new course "Cultural Foods." This article may assist you in teaching about Latin American cooking while we celebrate Hispanic Heritage Month. [The ABCs of Latino Cooking: Recipes and Food History That... | PBS](#)

More Food related material from PBS can be found at [PBS Food | Recipes, Food Shows & More | PBS](#)

## Alabama Restaurant and Hospitality Association's Grand Pineapple Golf Challenge Golf

Two of our ProStart Schools participated in the annual "Taste at the Tee" during the ARHA Grand Pineapple Golf Challenge on Monday, September 22 at Wynlakes Golf and Country Club in Montgomery, Alabama. Pelham High School made chocolate chip cookies for the golfers. St. Claire County/Moody High School Culinary brought their pizza oven and custom-made pizza for the golfers. Great job Pelham and Moody!



---

## CIA Professional Development Day

Save the date for our annual **CIA Professional Development Day on our New York campus**. You will have the opportunity to attend two unique educational sessions led by CIA faculty, network with other high school chef educators, enjoy a delicious meal (on us), and more.



Bonus! For your convenience, the sessions will also be available to join virtually. All the details, including a full agenda, will be coming soon. Attendance is free of charge so all you need to do now is get excited and mark your calendar!

**CIA Professional Development Day**  
**Tuesday, November 5**  
**9:30 a.m.**  
**Hyde Park, NY Campus**

---

## FCCLA Chef Works

The new Chef Works 2024 flyer includes some new products while keeping core items at last year's pricing. The Essential coat is offered to FCCLA schools for \$11.95 (retail \$24.00). Please see the attached flyer for more details.

How to order:

Email: [Schools@chefworks.com](mailto:Schools@chefworks.com)

Visit the website - <https://www.chefworks.com/culinaryeducation>







School\_Culinary Insitute\_Flyer PROT 20240801.pdf

Download  
791.6 KB

---

## AHLEI and NRA Pricing List

Attached below is the current pricing list for textbooks and cri's from both AHLEI and NRA. FYI: There may be price changes coming in October.



ALABAMA Product Price List 4-2024 (2).xlsx

Download  
16.4 KB

---

## Food Safety Month Resources from ServSafe

Commanders Adam Kramer and Beth Wittry are Environmental Health Officers in CDC's Water, Food, and Environmental Health Services Branch.

Even in the most well-run restaurants, a foodborne outbreak may occur. An outbreak is when multiple people get sick from eating the same food. Many foodborne outbreaks in restaurants are identified from customer complaints of illness to the health department.

Restaurant managers and staff may be used to seeing health department inspectors in the restaurant. However, outbreak investigations are different from routine inspections.

- Routine inspections focus on ensuring restaurants meet food safety regulations. They are focused on food safety practices and conditions at the time of the inspection.
- Investigations focus on identifying the specific food and circumstances that led to the outbreak. This usually means they are focused on food safety practices and conditions that occurred in the past—at the time the food that caused the outbreak was prepared. Their goal is to identify what led to the breakdown in food safety that caused the outbreak.

[Food Safety Focus - Food Safety Focus - Blog](#)

### **Upcoming Webinar:**

**Building a Culture of Food Safety & Hygiene** with  
Jill Trider (Tork, an Essity Brand), Patrick Guzzle (ServSafe)  
October 9, 2024

[REGISTER NOW](#)

---





## 2025 FCCLA Culinary STAR Events

FCCLA Culinary Arts and Baking and Pastry Arts Competition has been set!

February 7-8, 2025

(Weather date February 21-22)

Jefferson State Community College Hospitality Institute

---

## 2025 ProStart Competition

The date for the Alabama State ProStart Culinary and Management Competitions has been set. Competitors will meet at the Perdido Beach Resort, February 23-24 for the annual competition.



EARLY CHILDHOOD EDUCATION

EDUCATORS IN TRAINING

EDUCATION AND  
TRAINING



---

## Praxis ParaPro Credential

You may have noticed that the Praxis ParaPro Credential has been approved for Educators and Training program! The Alabama State Department of Education Career and Technical Education Division has been working diligently with Praxis with details in offering the new credential this school year. We are excited to announce that the credential will be available soon. A committee will be working to create the Alabama cut score and details on testing. Stay tuned for more information.

---

## Google for Education Video Channel

Did you know that Google for Education has monthly 90 second videos plus resources for using Google? Search Youtube for **EDU in 90** for a playlist of videos with tips and tricks for using Google for Education or subscribe to the Google for Education channel on Youtube for more videos



### EDU in 90

EDU in 90 is a video series from Google for Education. Each episode, we'll focus on an important topic for educators, administrators, and school leaders - th...

[youtube.com](#)

---

## New Education and Training STAR Event Now Available in Alabama

Last year, National FCCLA piloted Teaching Strategies in 5 states. This year Teaching Strategies is open to all states. Please see the attached documents for more information.



**Teaching Strategies.pdf**

[Download](#)  
285.6 KB



**Teaching Strategies Lesson Plan Template.docx**

[Download](#)  
26.0 KB

---

## FCCLA UPDATES



## Registration for State Leadership Conference Opens October 1!

Many of you have been asking...now it's time. Registration for SLC 2025 is now open. See the conference registration guide in the FCCLA Adviser manual for details. Please also note that your chapter must be fully affiliated to register for conference.

Changes to the registration this year include:

- They system will ask for an approved purchase order if you are not paying by credit card
- There is a 3% fee for credit card payments (non-refundable)
- You will receive a link to book your lodging after registration has been submitted.

[SLC Registration Portal](#)

2025 State Leadership Conference Registration Rates <small>*To register, members and advisers must be affiliated with National FCCLA</small>	Early Bird Rate (non-refundable) October 1, 2024-December 1, 2025	Regular Rate (non-refundable) December 2, 2024-January 15, 2025	Late Rate (non-refundable) January 15, 2025-February 3, 2025
Full Conference Registration for affiliated members, advisers and chaperones.	\$45 per person	\$55 per person	\$65 per person
STAR Event Registration Fee	\$5 per person	\$10 per person	\$15 per person
School Administration/CTE Directors	\$0	\$0	\$0
Judges (no access to sessions)	\$0	\$0	\$0
Opening Session Tickets	\$15	\$20	\$25
Closing Session Tickets	\$15	\$20	\$25

**Additional Items available for purchase:**

- Conference T-shirt (\$10 small - X Large ++ for larger sizes)



- Disney Character Walk (\$5 per person, with profits going to state project)
- Disney Movie Night (\$5 per person includes movie, popcorn and drink with profits going to state project)

**Additional Activities (no charge, but must sign up in the registration portal)**

- Say Yes to FCS Signing Ceremony (for graduating seniors pursuing a degree in an FCS field)
- Fashion Show (open to members participating in either Fashion Design or Fashion Construction STAR Events)

**There will be no on-site registration  
Guest Tickets need to pre-ordered**



**Banner Parade Guidelines 25.pdf**

[Download](#)

142.8 KB

---

## FCCLA Adviser Manual

State Officer Team

Calendar of Events

Affiliation Information

**FCCLA Online Membership Step-by-Step Instructions**

Accessing FCCLA

Activities for Effective FCCLA Integration into Classroom Instruction

Teach CTSO Resources

Alabama FCCLA and CTSO Events

- DISCOVER
- ACE
- JLDC

State Leadership Conference

- **Registration Guide**
- STAR Event Information
- STAR Events by the Number
- Competitive Events by Pathway
- Chapter Recognition Awards
- Adviser Awards

National Conferences and Events

The Adviser Manual was updated 9/30/24



Adviser Manual 2024.pdf

Download  
6.3 MB

## Affiliation Help

Great news, affiliation rates stay the same for the 4th year!

### Alabama FCCLA Affiliation Rates 2024-25

Regular Membership: 12 minimum:  
\$9 National + \$6 State = \$15 total  
Advisers, national rate only

Up to 25 Package:  
National \$395 + State \$125 = \$520

- 25 student member national and state affiliations
  - Unlimited chapter adviser national affiliations in one chapter (this will only apply to chapters advisers in which the enrolled chapter is their primary chapter)
  - One (1) Adviser Academy Registration
  - One (1) National Program of your choice (electronic version)
  - One (1) Lifetime Alumni & Associates membership for any one of their choice
- \*\*Student members in excess of 25 will be charged the \$9 national affiliation rate plus the state affiliation rate.

Unlimited Members Package  
National \$775 + \$500 State = 1275

- Unlimited student member national and state affiliations in one chapter
- Unlimited chapter adviser national affiliations in one chapter (this will only apply to chapter advisers in which the enrolled chapter is their primary chapter)
- One (1) Adviser Academy Registration
- One (1) National Program of your choice (electronic version)
- One (1) Lifetime Alumni & Associates membership for any one of their choice

Middle School Unlimited Membership  
National \$250 + State \$250 = \$500

- Adviser pays National dues only \$9



2024-2025 Step-By-Step Affiliation Instructions.pdf

Download  
906.8 KB

### Membership Information Form

Entering each student's name by hand can be very time consuming. Below are links to a Microsoft form and a Google Form that will help with information about your members. ***Be sure to make a copy of the form so you are the owner. Once you have your own copy, you can send the link to your members to complete. Data will come to you in a csv or excel document that can then be uploaded***

into your affiliation portal. Otherwise, your information will come to Theresa instead of to you. And she doesn't need it :)

[Microsoft Membership Information Form](#) (updated link 9/13/24)

[Google Membership Information Form](#) (updated link 9/13/24)

---

## Fundraiser Opportunities

### We Help Two Sock Fundraiser

FCCLA is excited to be partnering with We Help Two again this year!

Your chapter can run a funky sock or blanket fundraiser and make twice the difference this fall.

You can find all of the program info [HERE](#)



WeHelpTwo.pdf

Download

501.1 KB

---

## Funds for Orgs Shoe Fundraiser

How it Works

The best part about this fundraising opportunity is that it's completely FREE for chapters and members. Funds2Orgs provides all the necessary resources for a successful campaign.

[Click herefor more information!](#)



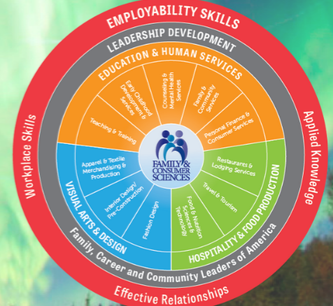
Funds for Orgs Shoe Fundraiser.pdf

Download

330.6 KB



# Professional Development Opportunities





---

## FCCLA Chapter Adviser Summit

You are invited to attend the 2025 Chapter Adviser Summit being held January 15-18, 2025 in Orlando, FL! Don't miss this opportunity for professional development and to check out the 2025 National Leadership Conference location!

The FCCLA Chapter Adviser Summit (CAS) provides FCCLA Chapter Advisers with a wealth of professional development opportunities designed specifically for Family and Consumer Sciences education teachers looking to excel in the classroom and in FCCLA. The CAS is developed and led by FCCLA's National Staff and the National Consultant Team. Attendees will receive up-to-date professional development training, share ideas, and network with other chapter advisers from across the nation.

Registration opens November 1, 2024.



**2025 CAS AAG (8-20-24).pdf**

[Download](#)

201.0 KB

---

## FCCLA New Chapter Adviser Academy-Engage

The New Chapter Adviser Academy is designed for chapter advisers with 1-3 years of experience, offering guidance on starting and growing an FCCLA Chapter. The program features quarterly networking and mentoring sessions, support for integrating FCCLA programs into the classroom, and the development of a yearlong program of work. Advisers gain access to experienced mentors, resources for collaboration, and an understanding of FCCLA structures. Completion requires participation in at least three (3) of four (4) sessions, creating a program of work, and volunteering at regional, state, or local levels.

- Participants: Advisers who are in their first three years of teaching FCS or Advising FCCLA.
- Fee: Included as part of a membership package or \$45
- Requirements: Attend three (3) of the four (4) sessions to receive recognition for completion at NLC.

New Chapter Adviser Academy graduates will be recognized during the National Leadership Conference. They will also receive an FCCLA certificate of completion and two Continuing Education Units (CEU).

All sessions will be held at 7:00 PM ET on the dates listed in the information sheet below.

To register, you must be an affiliated adviser (or on a pending invoice) and register in the Meeting and Events section of the portal by **November 1, 2024**. For those not enrolled in Membership Packages, payment is due by **November 30, 2024**.



**2024-2025 Information Sheets - Adviser Academy 1.pdf**

[Download](#)  
258.1 KB

---

## FCCLA Adviser Academy 2.0: Excel

The Adviser 2.0 Academy is tailored for chapter advisers with four to five years of experience. The program offers quarterly sessions focused on new resources and opportunities with FCCLA, providing support and networking through discussions and breakout sessions. Participants enhance their skills in chapter management, share experiences, and develop a yearlong FCCLA program of work. Requirements include active participation in three (3) sessions and volunteering at FCCLA events as a Competitive Events evaluator or lead consultant, workshop leader, or presenter.

- Participants: Advisers who are in their fourth through fifth years of teaching FCS or Advising FCCLA.
- Fee: Included as part of a membership package or \$45.
- Requirements: Attend three (3) of the four (4) sessions to receive recognition for completion at NLC.

All courses will be held at 6:00 PM ET on the dates listed in the information sheet below.

To register, you must be an affiliated adviser (or on a pending invoice) and register in the Meeting and Events section of the portal by **November 1, 2024**. For those not enrolled in Membership Packages, payment is due by **November 30, 2024**.



**2024-2025 Information Sheets - Adviser Academy 2.pdf**

[Download](#)  
218.1 KB

---

## FCCLA Master Adviser Academy: Elite

The Master Adviser Academy is available for advisers with five (5) or more years of experience. It offers opportunities to create Nearpod lessons, develop FCCLA college-level courses, align standards with FCS education, and contribute to Competitive Events case studies. Participants benefit from learning alongside experienced peers, enhancing their resumes with national contributions, and receiving recognition at the 2025 National Leadership Conference. Completion of the course requires contributing four resources, with an option for an honors designation by fulfilling additional requirements.

- Participants: Advisers who have been teaching FCS or advising FCCLA for more than five (5) years.
- Fee: Included as part of a membership package or register for \$45.
- Requirements: Attend three (3) of the four (4) sessions and complete three (3) items to receive recognition for completion at NLC.

All courses will be held at 6:00 PM ET on the dates listed in the information sheet below.

To register, you must be an affiliated adviser (or on a pending invoice) and register in the Meeting and Events section of the portal by **November 1, 2024**. For those not enrolled in Membership Packages, payment is due by **November 30, 2024**.



**2024-2025 Information Sheets - Elite\_0.pdf**

[Download](#)

220.1 KB

---

## **Alabama Affiliate of American Association of Family and Consumer Sciences**

The Alabama Affiliate of AAFCS will hold it's annual spring conference, April 9-11. Save the date for this professional development event! More details coming soon.



## **American Association of Family and Consumer Sciences**

High quality professional development and networking opportunities for members and non-members is at the core of the Annual Conference. The conference objectives help provide a framework for the content to be addressed at and included in the 2025 Annual Conference. Join AAFCS in Kansas City, MO June 25-28, 2025.

---

## **ALSDE CTE SUMMER PROFESSIONAL DEVELOPMENT CONFERENCE 2025**

Just announced! The 2025 ALSDE CTE Summer Professional Development Conference will take place July 23-25, 2025, at the Mobile Convention Center. Mark your calendars!



**Alabama Association of Family and Consumer Sciences**



**Dr. Bernice Richardson,  
President**

For more information, contact  
Dr. Richardson @



**American Association of Family and Consumer Sciences**



[bernicerichardson175@gmail.com](mailto:bernicerichardson175@gmail.com)

Just a reminder that [Theresa](#) and [Kayla](#) are available for technical assistance visits to your school, phone or virtual platforms.



## Alabama Family and Consumer Sciences and FCCLA

Instagram: [@alafccla](#)

Email: [fccla@alsde.edu](mailto:fccla@alsde.edu)

Website: [Alabama State Department of Education - Alabama](#)

[Achieves - ALSDE](#)

[Home - Alabama FCCLA](#)

Location: [50 North Ripley Street, Montgomery, AL, USA](#)

Phone: 334-694-4750

Facebook: <https://www.facebook.com/ALAFCCCLA/>

Instagram: [@alafccla](#)



### Alabama FCS/FCCLA

Alabama is using Smore to create beautiful newsletters