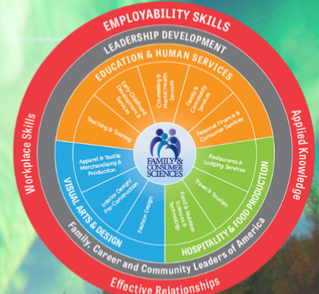


Alabama FCS Newsletter

September 4, 2024



Alabama Family and Consumer Sciences Newsletter



2024-25 Alabama FCS Directory

With so many moves and new faces, it's time to update our directory. Please complete the survey even if you haven't changed schools. You can scan the QR code or click [here](#) to complete the survey.

FCS Teacher Directory Information
2024-25



Summer Conference Session Request

One of our summer professional development presenters would like to connect with the participants in her session. If you attended the "Sew Lovely Projects to Inspire You and Your

New Teaching Assignments

New Teachers:

Latricia Arnold, Macon County CTC
Tasha Breland, Auburn High School
Colleen Butler, West Limestone
Lindsay Collins, Beulah High School
Jerrica Copeland, Andalusia High School
Anna Kerri Davis, Dadeville High School, new program!
Delana Donnell, Robertsdale High School
Makenzie Easley, Saraland High School
Briar Fowler, Appalachian High School
Anna Freeman, Mary G Montgomery
Michelle Gentry, Boaz High School, new teaching unit!
Allison Gibbs, Boaz Middle School
Aneesa Hamilton, Decatur High School
Courtne Harper, Demopolis High School
Brianna Henson, North Sand Mountain
Autumn Hillier, Baker High School
Madison Johnson, Elba High School
Megan Johnson, Opelika High School
Jessica Kendrick, Northside High School-Tuscaloosa
Janice Kidd, Chickasaw High School, new program!
Shaley Lewis, Pisgah High School
Claire Maceina, Fairhope High School
AnnMarie McCondichie, North Jefferson Middle School
Abby McGinnis, Saraland Middle School
Tywana McGrew, Choctaw County High School
Amie Fain Miller, Geneva Career Tech Center
Kim Patterson, Rogers High School
Jonathan Raspberry, Spanish Fort High School
Madeline Rogers, Jacksonville High School
Adrianna Rowell, Reeltown High School
Jordan Shelton, Russellville High School
Cindy Smith, DeKalb County Tech Center, new program!
Kristen Stallings, Chelsea Middle School
Amanda Stewart, Charles Henderson High School
Malaysia Thornton-Jackson, Vigor High School
Jordon Tidwell, Austin High School
Amanda Trantum, Hubbertville High School
Council Turner III, Chambers County Career Tech Center
Tasha Vick, Carbon Hill High School

Movers and Shakers:

Leigh Ann Arnold: from Valley Head High School to Collinsville High School

Katherine Graves: from Brooks High School to Central High School Florence

Jenna Huffstutler: from North Jefferson MS to Mortimer Jordan HS

Mimi Leverett: from Orange Beach HS to Elberta HS

Tabitha Malone: Austin Jr. High School

Kim Patterson: from Saraland Middle to Rogers High School

April Shrader: from Sparkman High School to Valley Head High School

If you know of any other new teachers or teachers that have moved to a difference school, please email theresa.long@alsde.edu.



The Alabama Farmers Federation is excited to focus on the future during our annual Alfa Youth Leadership Conference. We're looking for driven, energetic high school freshmen and sophomores — the key to unlocking Alabama's future success. Can you help?

Nov. 4-5, 2024

After the free, two-day training at the Alabama 4-H Center in Columbiana, students should be prepared to:

- ✓ Advocate for agriculture
- ✓ Identify their potential to better serve communities
- ✓ Step into leadership roles

The conference includes:

- ✓ High-energy workshops
- ✓ Motivational speakers
- ✓ Outdoor activities and games
- ✓ Relationship-building with leaders across the state

You can help by forwarding application information to your colleagues, friends and family members.

To apply, visit AlfaFarmers.org.
Application deadline: Sept. 16

Questions?
Contact the Federation's Hunter McBryer at (334) 612-5610.

FCCLA members have been invited to attend!

The Alabama Farmers Federation is excited to focus on the future during our annual Alfa Youth Leadership Conference **November 4-5**. We're looking for driven, energetic high school freshmen and sophomores — the key to unlocking Alabama's future success. Applications are now open! After the free, two-day training at the Alabama 4-H Center in Columbiana, students should be prepared to:

- * Advocate for agriculture
- * Identify their potential to better serve communities
- * Step into leadership roles

The conference includes:

- * High-energy workshops

- * Motivational speakers
- * Outdoor activities and games
- * Relationship-building and networking opportunities with leaders across the state

To learn more, read our [Neighbor's article highlighting last year's conference](#), and check out the [application here](#) or at AlfaFarmers.org. Applications will be accepted through September 16th.

****Applicants who are accepted will receive confirmation on October 4th via email. When applying, please provide an email that is checked often. The email will contain a medical release form, conduct agreement, camper checklist, agenda and general information. Medical release form and conduct agreement must be signed, scanned and emailed to amonk@alfafarmers.org by October 11th****

Application Link: [EmailMe Form - Alabama Youth Leadership Conference](#)

Neighbor's Magazine Link: [Neighbor's article highlighting last year's conference](#)

YouTube Link- [Information on the Alfa YLC Service Project 2023](#)

You can help by forwarding application information to your colleagues, friends and family members. Questions? Contact the Federation's Hunter McBrayer @ 334-612-5610.

Hunter McBrayer

Director- Young Farmers Division

Alabama Farmers Federation

(334) 612-5610

JLDC Registration is Still Open!

ALABAMA JOINT LEADERSHIP DEVELOPMENT CONFERENCE (JLDC)

With nearly 5,000 students, educators, industry leaders, administrators and counselors attending, Alabama's Joint Leadership Development Conference is the largest non-athletic joint gathering of students in the South Eastern United States for an educational purpose.

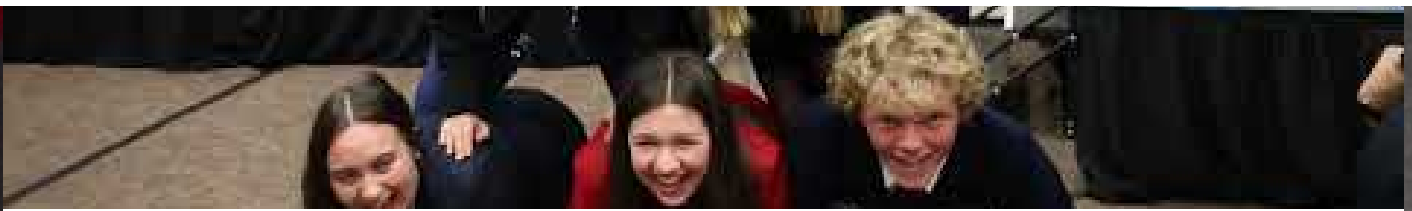
The goal of JLDC is to build Alabama's College+Career-Ready workforce with employability skills, leadership training, exposure to Alabama's career opportunities, and increased knowledge of CTE+CTSO opportunities.

Three opportunities; Mobile October 8, Huntsville Oct 10, and live virtual October 18.

For more information and to register your chapter members go to [JLDC - Alabama CTSO](#).

JLDC 2024 | Hype Video





EARLY CHILDHOOD
DEVELOPMENT SERVICES

CONSUMER SERVICES

FAMILY STUDIES AND COMMUNITY
SERVICES

FOOD, WELLNESS AND DIETETICS

New Personal Finance STAR Event and Curriculum

FCCLA and EverFi have joined forces to create a new STAR Event for Personal Finance. The event uses the **FREE** Everfi modules to teach financial literacy while the member works through the STAR Event creating a financial portfolio.

- Unlimited student accounts
- Different modules for different levels
- Great for integrating FCCLA into the classroom, especially if you are teaching Personal Finance or in the Consumer Services Program!

Other available modules include but not limited to:

- Digital Wellness and Safety
- Bullying Prevention
- Mental Wellness
- Vaping
- College and Career Readiness



EVERFI-K-12-Course-Catalog.pdf

[Download](#)

10.2 MB



EVERFI-K-12-Overview.pdf

[Download](#)

2.7 MB



Personal Finance Presented by EVERFI.pdf

[Download](#)

422.2 KB

Food Science Toolbox

Incorporating science into your curriculum may not be as hard as you think. Check out the Food Science Toolbox created by Dr. Courtney Simons, food scientist and educator. Free and for-purchase products available.

[Food Science Toolbox is Delivering high-quality food science education and training. \(buymeacoffee.com\)](http://buymeacoffee.com)



093336_Documenting_Investigating_and_Reporting_Foodborne_Illnesses.pdf

[Download](#)

452.4 KB



093346_Quiz.pdf

[Download](#)

199.4 KB

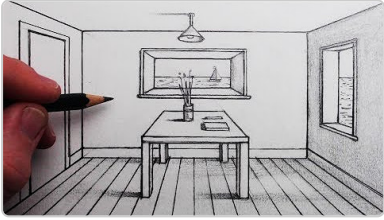
FASHION

VISUAL DESIGN

INTERIOR DESIGN



Are your students having trouble understanding and drawing wall elevations by hand. Check out this YouTube channel.



How to Draw 1-Point Perspective: Circle Line Art School

Learn how to draw 1-point perspective from a bird's eye view, looking straight down from high above. See how to draw a city using one-point perspective, lear...

[youtube.com](https://www.youtube.com)



HOSPITALITY AND TOURISM

FOOD AND BEVERAGE SERVICES

LODGING

SPORTS, RECREATION AND
ATTRACTIONS

TRAVEL AND TOURISM

Online Culinary STAR Event

If you were at summer conference, you may remember that an online culinary STAR Event was being developed. There has been a pause on completing the writing of this event and will not be offered this year. Sorry for any confusion or disappointment.

Teacher ServSafe Certification/Recertification

9/4 PRATTVILLE
9/4 BIRMINGHAM
9/16 OPELIKA
9/17 DOTHAN
9/17 TRUSSVILLE
9/18 MOBILE
9/18 TUSCALOOSA
9/24 HUNTSVILLE
9/30 SPANISH FORT
10/15 DOTHAN
11/19 DOTHAN
12/17 DOTHAN

The Alabama Restaurant and Hospitality Alliance is once again offering ServSafe credentialing free of charge for FCS teachers. For more information contact melissa@arhaonline.com or complete this [form](#).

FCCLA Chef Works

The new Chef Works 2024 flyer includes some new products while keeping core items at last year's pricing. The Essential coat is offered to FCCLA schools for \$11.95 (retail \$24.00). Please see the attached flyer for more details.

How to order:

Email: Schools@chefworks.com

Visit the website - <https://www.chefworks.com/culinaryeducation>



School_Culinary Insitute_Flyer PROT 20240801.pdf

[Download](#)
791.6 KB

Center for Advacement of FoodService Education (CAFE) Podcasts

CAFÉ Mission: "To link the foodservice industry with the foodservice classroom." This is exactly what CAFÉ Talks Podcast strives to accomplish. Through nearly 90 interviews with some of the most influential people in education, culinary classrooms, the foodservice industry, leadership, innovation, culinary history, and management – there is something for everyone to relish and use. The chart attached demonstrates where each interview might apply in your classrooms as assignments or a point of reference for faculty. All podcasts can be accessed through the CAFÉ website at: www.cafemeetingplace.com or wherever you turn to listen to podcasts such as iTunes and Spotify.



CAFE Talks Podcasts - Organized.pdf

[Download](#)
124.0 KB

AHLEI and NRA Pricing List

Attached below is the current pricing list for textbooks and cri's from both AHLEI and NRA. FYI: There may be price changes coming in October.



ALABAMA Product Price List 4-2024 (2).xlsx

[Download](#)
16.4 KB



2025 FCCLA Culinary STAR Events

FCCLA Culinary Arts and Baking and Pastry Arts Competition has been set!

February 7-8, 2025

(Weather date February 21-22)

Jefferson State Community College Hospitality Institute

EARLY CHILDHOOD EDUCATION

EDUCATORS IN TRAINING

EDUCATION AND TRAINING



FTA Grant Application

The 2024-25 FTA Grant Application is now open. The grant will award \$1000 in a teacher stipend and a \$500 grant for classroom supplies. A maximum of 166 grants will be awarded. The deadline to submit the grant application is Tuesday, September 17, 2024 at 4:30 pm. Grant applications will be completed online this year. Please see the link below for the application and more detailed information.

[FTA Information and Application](#)



Future Teachers of Alabama MEMO (FTA) Program Director Stipend Grant.pdf

[Download](#)

206.5 KB



FCCLA UPDATES

2024-25 Alabama FCCLA State Theme



Affiliation Help

Great news, affiliation rates stay the same for the 4th year!

Alabama FCCLA Affiliation Rates 2024-25

Regular Membership: 12 minimum:
\$9 National + \$6 State = \$15 total
Advisers, national rate only

Up to 25 Package:
National \$395 + State \$125 = \$520

- 25 student member national and state affiliations
 - Unlimited chapter adviser national affiliations in one chapter (this will only apply to chapters advisers in which the enrolled chapter is their primary chapter)
 - One (1) Adviser Academy Registration
 - One (1) National Program of your choice (electronic version)
 - One (1) Lifetime Alumni & Associates membership for any one of their choice
- **Student members in excess of 25 will be charged the \$9 national affiliation rate plus the state affiliation rate.

Unlimited Members Package
National \$775 + \$500 State = 1275

- Unlimited student member national and state affiliations in one chapter
- Unlimited chapter adviser national affiliations in one chapter (this will only apply to chapter advisers in which the enrolled chapter is their primary chapter)
- One (1) Adviser Academy Registration
- One (1) National Program of your choice (electronic version)
- One (1) Lifetime Alumni & Associates membership for any one of their choice

Middle School Unlimited Membership
National \$250 + State \$250 = \$500

- Adviser pays National dues only \$9



2024-2025 Step-By-Step Affiliation Instructions.pdf

Download

906.8 KB

Membership Information Form

Entering each student's name by hand can be very time consuming. Below are links to a Microsoft form and a Google Form that will help with information about your members. **Be sure to make a copy of the form so you are the owner. Once you have your own copy, you can send the link to your members to complete. Data will come to you in a csv or excel document that can then be uploaded into your affiliation portal.** Otherwise, your information will come to Theresa instead of to you. And she doesn't need it :)

[Microsoft Membership Information Form](#)

[Google Membership Information Form](#)

Fundraiser Opportunities

We Help Two Sock Fundraiser

FCCLA is excited to be partnering with We Help Two again this year!
Your chapter can run a funky sock fundraiser and make twice the difference this fall.
You can find all of the program info [HERE](#)

Here are the most important points:

- There is no upfront cost to run a sock fundraiser
- Socks can be sold in person and/or online
- You can keep 50% of the sales
- 3-pair packs sell for \$15 and super singles sell for \$3
- We Help Two also has a service project where your chapter can raise funds to sponsor a student in Uganda.
- Local giveback: Based on how many socks you sell, your chapter will also receive socks to donate to people in need right in your community.

New Stadium Blanket Fundraiser

Looking for another option other than socks? We have a cozy option just in time for football season! Our custom stadium blanket is the ultimate companion for comfort and warmth. During those chilly game nights, outdoor adventures, or cozy evenings at home.

These blankets are ultra-warm and soft on one side and water/windproof on the reverse side.

At 50" X 60", these stadium blankets are just the right size.

You can see all of the details [HERE](#)

Get started today.

Click [HERE](#) to sign up and start rocking your socks and blankets!

And remember.....SOCKTOBERFEST is coming soon!



WeHelpTwo.pdf

[Download](#)
501.1 KB

Funds for Orgs Shoe Fundraiser

How it Works

The best part about this fundraising opportunity is that it's completely FREE for chapters and members. Funds2Orgs provides all the necessary resources for a successful campaign. Here's

Just a reminder that [Theresa](#) and [Kayla](#) are available for technical assistance visits to your school, phone or virtual platforms.



Alabama Family and Consumer Sciences and FCCLA

Instagram: [@alafccla](#)

Email: fccla@alsde.edu

Website: [Alabama State Department of Education - Alabama](#)

[Achieves - ALSDE](#)

[Home - Alabama FCCLA](#)

Location: [50 North Ripley Street, Montgomery, AL, USA](#)

Phone: 334-694-4750

Facebook: <https://www.facebook.com/ALAFCCCLA/>

Instagram: [@alafccla](#)



Alabama FCS/FCCLA

Alabama is using Smore to create beautiful newsletters