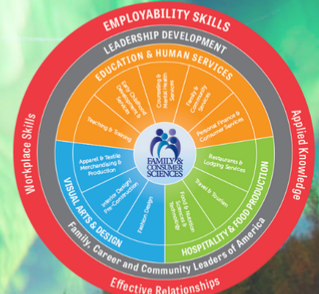


Alabama FCS Newsletter

September 16, 2024



Alabama Family and Consumer Sciences Newsletter



2024-25 Alabama FCS Directory

With so many moves and new faces, it's time to update our directory. Please complete the survey even if you haven't changed schools. You can scan the QR code or click [here](#) to complete the survey.

FCS Teacher Directory Information
2024-25



Alabama FCS/FCCLA SLACK Group

Alabama FCCLA now has a slack channel. We are aware that many systems block mass emails, including the newsletter and ALSDE. In an effort to be able to get as much information out to you



as possible, we have created a SLACK. If you have never used SLACK, it is a great messaging tool that allows attachments that will not clog up your email or be blocked due to the size. It is accessible on your computer as well as smart phone. To join, go to https://join.slack.com/t/alabamafccla/shared_invite/zt-2pics65zo-yO~baIK_a8vA8Suhvf4z_g. If you have any questions with signing up, please reach out to hello@alabamactso.org for technical assistance. Please also see the attachment with more information.

All Alabama FCS teachers are encouraged to join the group.



Alabama FCCLA Welcome to SLACK v2 (1).pdf

[Download](#)

123.4 KB

Farm to Table Catfish Professional Development

Alabama FCCLA and Alabama Farmers Federation have teamed up to sponsor a Catfish Farm to Table professional development for Alabama Family and Consumer Sciences teachers, October 24, 2024, in Greensboro, AL.

Workshops include:

- Tour a catfish farm
- Introduction to the Alabama Fish Farming Center and Fried Catfish Lunch
- Catfish Cooking Demonstration with Stacey Little of Southern Bites.

FYI: Catfish will be the protein for the FCCLA Culinary STAR Event!

[Registration](#) is only \$10 and is open to the first 50 registrants.



Farm to Table Catfish PD Flyer.pdf

[Download](#)

3.4 MB



Summer Conference Session Request

One of our summer professional development presenters would like to connect with the participants in her session. If you attended the "**Sew Lovely Projects to Inspire You and Your Students**" with **Cathy Jones** please email her @ cjones01@ALSDE.edu.

New Teaching Assignments

New Teachers:

Latricia Arnold, Macon County CTC
Tasha Breland, Auburn High School
Colleen Butler, West Limestone
Lindsay Collins, Beulah High School
Jerrica Copeland, Andalusia High School
Anna Kerri Davis, Dadeville High School, new program!
Stephanie Dillon, Orange Beach High School
Delana Donnell, Robertsdale High School
Makenzie Easley, Saraland High School
Briar Fowler, Appalachian High School
Anna Freeman, Mary G Montgomery
Michelle Gentry, Boaz High School, new teaching unit!
Allison Gibbs, Boaz Middle School
Anneesa Hamilton, Decatur High School
Courtne Harper, Demopolis High School
Brianna Henson, North Sand Mountain
Autumn Hillier, Baker High School
Emma Horst, Hillcrest High School
Nakethia Ingram, Bob Jones High School
Madison Johnson, Elba High School
Megan Johnson, Opelika High School
Jessica Kendrick, Northside High School-Tuscaloosa
Janice Kidd, Chickasaw High School, new program!
Shaley Lewis, Pisgah High School
Claire Maceina, Fairhope High School
Abby McGinnis, Saraland Middle School
Tywana McGrew, Choctaw County High School
Amie Fain Miller, Geneva Career Tech Center
Jonathan Raspberry, Spanish Fort High School
Taylor Rolin, Escambia County High School
Adrianna Rowell, Reeltown High School
Emily Roy, Pelham High School
Jordan Shelton, Russellville High School
Cindy Smith, DeKalb County Tech Center, new program!
Kristen Stallings, Chelsea Middle School
Amanda Stewart, Charles Henderson High School

Malaysia Thornton-Jackson, Vigor High School
Jordon Tidwell, Austin High School
Amanda Trantum, Hubbertville High School
Council Turner III, Chambers County Career Tech Center
Tasha Vick, Carbon Hill High School

Movers and Shakers:

Leigh Ann Arnold: from Valley Head High School to Collinsville High School
Katrina Clay: from Mcadory Middle to Bessemer Center for Technology
Monica Creekmore: from Bob Jones to East Limestone
Katherine Graves: from Brooks High School to Central High School Florence
Amie Huff: from Sparkman High School to Bob Jones High School
Jenna Huffstutler: from North Jefferson MS to Mortimer Jordan HS
Mimi Leverett: from Orange Beach HS to Elberta HS
Tabitha Malone: Austin Jr. High School
AnnMarie McCondichie, Pleasant Grove High School to North Jefferson Middle School
Kim Patterson: from Saraland Middle to Rogers High School
Madeline Rogers, Tanner High School to Jacksonville High School
April Shrader: from Sparkman High School to Valley Head High School
Nissi Clingan Stansell: from West Limestone to Brooks High School

If you know of any other new teachers or teachers that have moved to a difference school, please email theresa.long@alsde.edu.

JLDC Registration is Still Open!

ALABAMA JOINT LEADERSHIP DEVELOPMENT CONFERENCE (JLDC)

With nearly 5,000 students, educators, industry leaders, administrators and counselors attending, Alabama's Joint Leadership Development Conference is the largest non-athletic joint gathering of students in the South Eastern United States for an educational purpose.

The goal of JLDC is to build Alabama's College+Career-Ready workforce with employability skills, leadership training, exposure to Alabama's career opportunities, and increased knowledge of CTE+CTSO opportunities.

Three opportunities; Mobile October 8, Huntsville Oct 10, and live virtual October 18.

For more information and to register your chapter members go to [JLDC – Alabama CTSO](#).

JLDC 2024 | Hype Video





HUMAN SERVICES

- EARLY CHILDHOOD DEVELOPMENT SERVICES
- CONSUMER SERVICES
- FAMILY STUDIES AND COMMUNITY SERVICES
- FOOD, WELLNESS AND DIETETICS

New Personal Finance STAR Event and Curriculum

FCCLA and EverFi have joined forces to create a new STAR Event for Personal Finance. The event uses the **FREE** Everfi modules to teach financial literacy while the member works through the STAR Event creating a financial portfolio.

- Unlimited student accounts
- Different modules for different levels
- Great for integrating FCCLA into the classroom, especially if you are teaching Personal Finance or in the Consumer Services Program!

Other available modules include but not limited to:

- Digital Wellness and Safety
- Bullying Prevention
- Mental Wellness
- Vaping
- College and Career Readiness



EVERFI-K-12-Course-Catalog.pdf

[Download](#)
10.2 MB



EVERFI-K-12-Overview.pdf

[Download](#)
2.7 MB



Personal Finance Presented by EVERFI.pdf

[Download](#)
422.2 KB

Food Science Toolbox

Incorporating science into your curriculum may not be as hard as you think. Check out the Food Science Toolbox created by Dr. Courtney Simons, food scientist and educator. Free and for-purchase products available.

[Food Science Toolbox is Delivering high-quality food science education and training. \(buymeacoffee.com\)](#)



093336_Documenting_Investigating_and_Reporting_Foodborne_Illnesses.pdf

[Download](#)
452.4 KB



093346_Quiz.pdf

[Download](#)
199.4 KB

FASHION

VISUAL DESIGN

INTERIOR DESIGN





One Year Teacher License for Chief Architect

Chief Architect Design is offering a free one-year teacher trial to their software for interior design teachers. You must use an education-based email. To request an account, please email Chief-Architect@chiefarchitect.com



HOSPITALITY AND TOURISM

FOOD AND BEVERAGE SERVICES

LODGING

SPORTS, RECREATION AND ATTRACTIONS

TRAVEL AND TOURISM

Online Culinary STAR Event

If you were at summer conference, you may remember that an online culinary STAR Event was being developed. There has been a pause on completing the writing of this event and will not be offered this year. Sorry for any confusion or disappointment.

Teacher ServSafe Certification/Recertification

9/17 TRUSSVILLE
9/18 MOBILE
9/18 TUSCALOOSA
9/24 HUNTSVILLE
9/30 SPANISH FORT
10/15 DOTHAN
11/19 DOTHAN
12/17 DOTHAN

The Alabama Restaurant and Hospitality Alliance is once again offering ServSafe credentialing free of charge for FCS teachers. For more information contact melissa@arhaonline.com or complete this [form](#).

FCCLA Chef Works

The new Chef Works 2024 flyer includes some new products while keeping core items at last year's pricing. The Essential coat is offered to FCCLA schools for \$11.95 (retail \$24.00). Please

see the attached flyer for more details.

How to order:

Email: Schools@chefworks.com

Visit the website - <https://www.chefworks.com/culinaryeducation>



School_Culinary Insitute_Flyer PROT 20240801.pdf

[Download](#)

791.6 KB

AHLEI and NRA Pricing List

Attached below is the current pricing list for textbooks and cri's from both AHLEI and NRA. FYI: There may be price changes coming in October.



ALABAMA Product Price List 4-2024 (2).xlsx

[Download](#)

16.4 KB



2025 FCCLA Culinary STAR Events

FCCLA Culinary Arts and Baking and Pastry Arts Competition has been set!

February 7-8, 2025

(Weather date February 21-22)

Jefferson State Community College Hospitality Institute

EARLY CHILDHOOD EDUCATION

EDUCATORS IN TRAINING

EDUCATION AND TRAINING



Praxis ParaPro Credential

You may have noticed that the Praxis ParaPro Credential has been approved for Educators and Training program! The Alabama State Department of Education Career and Technical Education Division has been working diligently with Praxis with details in offering the new credential this school year. We are excited to announce that the credential will be available soon. A committee will be working to create the Alabama cut score and details on testing. Stay tuned for more information.



FCCLA UPDATES

2024-25 Alabama FCCLA State Theme



FCCLA Adviser Manual

State Officer Team

Calendar of Events

Affiliation Information

FCCLA Online Membership Step-by-Step Instructions

Accessing FCCLA

Activities for Effective FCCLA Integration into Classroom Instruction

Teach CTSO Resources

Alabama FCCLA and CTSO Events

- DISCOVER
- ACE
- JLDC

State Leadership Conference

- Registration Guide
- STAR Event Information
- STAR Events by the Number
- Competitive Events by Pathway
- Chapter Recognition Awards
- Adviser Awards

National Conferences and Events



Adviser Manual 2024.pdf

Download
6.3 MB

Affiliation Help

Great news, affiliation rates stay the same for the 4th year!

Alabama FCCLA Affiliation Rates 2024-25

Regular Membership: 12 minimum:
\$9 National + \$6 State = \$15 total
Advisers, national rate only

Up to 25 Package:
National \$395 + State \$125 = \$520

- 25 student member national and state affiliations
 - Unlimited chapter adviser national affiliations in one chapter (this will only apply to chapters advisers in which the enrolled chapter is their primary chapter)
 - One (1) Adviser Academy Registration
 - One (1) National Program of your choice (electronic version)
 - One (1) Lifetime Alumni & Associates membership for any one of their choice
- **Student members in excess of 25 will be charged the \$9 national affiliation rate plus the state affiliation rate.

Unlimited Members Package
National \$775 + \$500 State = 1275

- Unlimited student member national and state affiliations in one chapter
- Unlimited chapter adviser national affiliations in one chapter (this will only apply to chapter advisers in which the enrolled chapter is their primary chapter)
- One (1) Adviser Academy Registration
- One (1) National Program of your choice (electronic version)
- One (1) Lifetime Alumni & Associates membership for any one of their choice

Middle School Unlimited Membership
National \$250 + State \$250 = \$500

- Adviser pays National dues only \$9



2024-2025 Step-By-Step Affiliation Instructions.pdf

Download
906.8 KB

Membership Information Form

Entering each student's name by hand can be very time consuming. Below are links to a Microsoft form and a Google Form that will help with information about your members. ***Be sure to make a copy of the form so you are the owner. Once you have your own copy, you can send the link to your members to complete. Data will come to you in a csv or excel document that can then be uploaded***

[into your affiliation portal.](#) Otherwise, your information will come to Theresa instead of to you. And she doesn't need it :)

[Microsoft Membership Information Form](#) (updated link 9/13/24)

[Google Membership Information Form](#) (updated link 9/13/24)

Fundraiser Opportunities

We Help Two Sock Fundraiser

FCCLA is excited to be partnering with We Help Two again this year!
Your chapter can run a funky sock fundraiser and make twice the difference this fall.
You can find all of the program info [HERE](#)

Here are the most important points:

- There is no upfront cost to run a sock fundraiser
- Socks can be sold in person and/or online
- You can keep 50% of the sales
- 3-pair packs sell for \$15 and super singles sell for \$3
- We Help Two also has a service project where your chapter can raise funds to sponsor a student in Uganda.
- Local giveback: Based on how many socks you sell, your chapter will also receive socks to donate to people in need right in your community.

New Stadium Blanket Fundraiser

Looking for another option other than socks? We have a cozy option just in time for football season! Our custom stadium blanket is the ultimate companion for comfort and warmth. During those chilly game nights, outdoor adventures, or cozy evenings at home.

These blankets are ultra-warm and soft on one side and water/windproof on the reverse side.

At 50" X 60", these stadium blankets are just the right size.

You can see all of the details [HERE](#)

Get started today.

Click [HERE](#) to sign up and start rocking your socks and blankets!

And remember.....SOCKTOBERFEST is coming soon!





WeHelpTwo.pdf

Download

501.1 KB

Funds for Orgs Shoe Fundraiser

How it Works

The best part about this fundraising opportunity is that it's completely FREE for chapters and members. Funds2Orgs provides all the necessary resources for a successful campaign. Here's how it works:

1. Sign up below to receive more information and schedule a conversation with the Funds2Orgs team to discuss when you'd like to kick off your drive.
2. Funds2Orgs fundraising coaches will guide you through the entire shoe drive fundraiser, ensuring your chapter's success.
3. Following a planning call, you'll receive a Welcome Kit packed with collection materials, marketing templates, and more to jumpstart your campaign.
4. Customize your promotion materials and social media posts with the support of Funds2Orgs to create an engaging and impactful outreach.
5. Collect gently worn, used, and new shoes from your school and community, generating momentum for your cause.
6. Once Funds2Orgs picks up the shoes, you can expect to receive a check within two days of receipt and processing!

Join us in this incredible fundraising journey with Funds2Orgs and make a meaningful difference while raising funds for your chapter. Together, we can create a brighter future for communities around the world.

[Click here to sign up!](#)



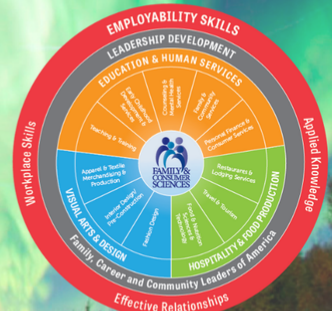
Funds for Orgs Shoe Fundraiser.pdf

Download

330.6 KB



Professional Development Opportunities





Alabama Association of Family and Consumer Sciences

Dr. Bernice Richardson, President

For more information, contact Dr. Richardson @ bernicerichardson175@gmail.com

American Association of Family and Consumer Sciences

Just a reminder that [Theresa](#) and [Kayla](#) are available for technical assistance visits to your school, phone or virtual platforms.



Alabama Family and Consumer Sciences and FCCLA

Instagram: @alafcccla

Email: fccla@alsde.edu

Website: [Alabama State Department of Education - Alabama](#)

[Achieves - ALSDE](#)

[Home - Alabama FCCLA](#)

Location: [50 North Ripley Street, Montgomery, AL, USA](#)

Phone: 334-694-4750

Facebook: <https://www.facebook.com/ALAFCCCLA/>

Instagram: [@alafcccla](#)



Alabama FCS/FCCLA

Alabama is using Smore to create beautiful newsletters