

OCTOBER

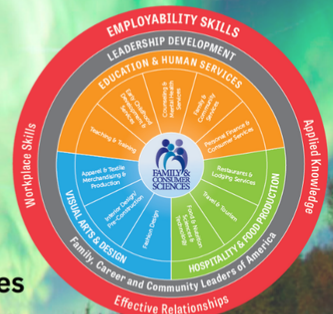
Breast Cancer  
awareness month

# Alabama FCS Newsletter

October 14, 2024

## Table of Contents

- Section 1: General FCS Information
- Section 2: Human Services
- Section 3: Visual Design
- Section 4: Hospitality and Tourism
- Section 5: Education and Training
- Section 6: FCCLA Updates
- Section 7: Professional Development Opportunities
- Section 8: Contact Us



## Farm to Table Catfish Professional Development

Alabama FCCLA and Alabama Farmers Federation have teamed up to sponsor a Catfish Farm to Table professional development for Alabama Family and Consumer Sciences teachers, October 24, 2024, in Greensboro, AL.

Workshops include:

- Tour a catfish farm
- Introduction to the Alabama Fish Farming Center and Fried Catfish Lunch
- Catfish Cooking Demonstration with Stacey Little of Southern Bites.

FYI: Catfish will be the protein for the FCCLA Culinary STAR Event!

**Registration** is open until **October 17** and is only \$10 and is open to the first 50 registrants.



**Farm to Table Catfish PD Flyer.pdf**

[Download](#)  
3.4 MB

---

## Alabama FCCLA State Project



Alabama FCCLA is excited to kick off our State Service Project for this year! We will be fundraising for Make-A-Wish and working to grant a Wish Kid's wish. Our fundraising goal is \$10,000. We can easily meet and exceed this if every chapter raises at least \$100.

This ensures that Alabama FCCLA will be able to sponsor a full wish. However, please do not limit yourselves to just this amount as every dollar raised benefits a wish child. Fundraising efforts will be tracked through Make-A-Wish's Wish Your Way site. People can donate directly through your chapter's Wish Your Way page or your chapter members may collect offline donations by cash or check.



**Make-A-Wish Sign Up Instructions.pdf**

[Download](#)  
42.1 KB

Another option to participate in our state project is to bring supplies to State Leadership Conference to donate to Children's Harbor. The mission of Children's Harbor is to strengthen families of seriously ill children through refuge, respite and resources. These unique, no-cost services are offered at both "The Harbor" Family Center located at Children's of Alabama in Birmingham, and at the Lake Martin retreat facility in Alexander City. Children's Harbor has been in service since 1989. To find out more about the services and mission of Children's Harbor visit their website at



[Children's Harbor - Serving Children With Serious Illnesses \(childrensharbor.com\)](http://childrensharbor.com)

A requested list of item donations can be found here [Item Donations | Children's Harbor \(childrensharbor.com\)](http://childrensharbor.com)

Two FCCLA blazers will be awarded at SLC. One for the most donations collected for Make a Wish and one for the most donations for Children's Harbor.

---

## Alabama FCS/FCCLA SLACK Group

Alabama FCCLA now has a slack channel. We are aware that many systems block mass emails, including the newsletter and ALSDE. In an effort to be able to get as much information out to you as possible, we have created a SLACK. If you have never used SLACK, it is a great messaging tool that allows attachments that will not clog up your email or be blocked due to the size. It is accessible on your computer as well as smart phone. To join, go to

[https://join.slack.com/t/alabamafccla/shared\\_invite/zt-2pics65zo-yO~balk\\_a8vA8Suhvf4z\\_g](https://join.slack.com/t/alabamafccla/shared_invite/zt-2pics65zo-yO~balk_a8vA8Suhvf4z_g). If you have any questions with signing

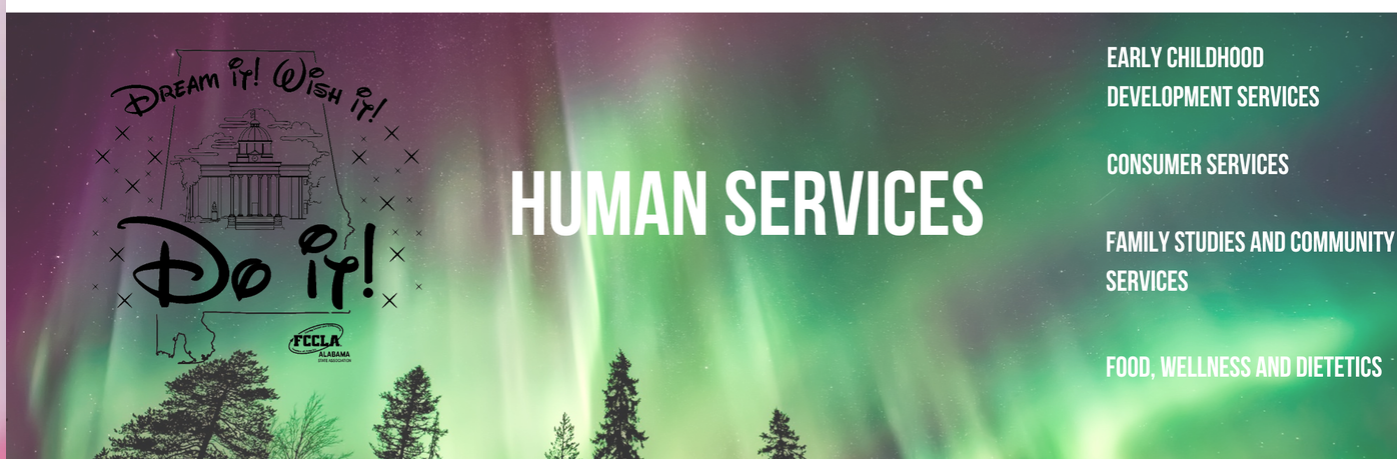
up, please reach out to [hello@alabamactso.org](mailto:hello@alabamactso.org) for technical assistance. Please also see the attachment with more information. All Alabama FCS teachers are encouraged to join the group.



**Alabama FCCLA Welcome to SLACK v2 (1).pdf**

**Download**

123.4 KB



## October Cooking

This October is the perfect time to dive into the delicious world of Polish cuisine during Polish American Month. Whether you're a fan of pierogi, paczi, or buttery babka, it's the ideal month to experiment with new recipes and celebrate Polish culture. Share your creations, swap recipes, and let's fill our kitchens with the rich flavors and traditions of Poland.

The Home Baking Association has recipes you can make to explore this cuisine as well as many more!

[October 2024 Baking Calendar-e \(homebaking.org\)](https://homebaking.org).

Real Sugar Day, October 14, Lesson Plans

World Food Day, October 16

And of course, new pumpkin recipes!

FASHION

INTERIOR DESIGN

# VISUAL DESIGN



## One Year Teacher License for Chief Architect

Chief Architect Design is offering a free one-year teacher trial to their software for interior design teachers. You must use an education-based email. To request an account, please email [Chief-Architect@chiefarchitect.com](mailto:Chief-Architect@chiefarchitect.com)



# HOSPITALITY AND TOURISM

FOOD AND BEVERAGE SERVICES

LODGING

SPORTS, RECREATION AND  
ATTRACTIONS

TRAVEL AND TOURISM

## CIA Professional Development Day

Save the date for our annual **CIA Professional Development Day on our New York campus**. You will have the opportunity to attend two unique educational sessions led by CIA faculty, network with other high school chef educators, enjoy a delicious meal (on us), and more.

Bonus! For your convenience, the sessions will also be available to join virtually. All the details, including a full agenda, will be coming soon. Attendance is free of charge so all you need to do now is get excited and mark your calendar!



## CIA Professional Development Day

Tuesday, November 5

9:30 a.m.

Hyde Park, NY Campus

---

## FCCLA Chef Works

The new Chef Works 2024 flyer includes some new products while keeping core items at last year's pricing. The Essential coat is offered to FCCLA schools for \$11.95 (retail \$24.00). Please see the attached flyer for more details.

How to order:

Email: [Schools@chefworks.com](mailto:Schools@chefworks.com)

Visit the website - <https://www.chefworks.com/culinaryeducation>



**School\_Culinary Insitute\_Flyer PROT 20240801.pdf**

[Download](#)

791.6 KB

---

## Culinary Competitions

### **CNP Jr. Chef Competition**

January 17, 2025

Jefferson State Community College Culinary and Hospitality Institute  
Hoover, Alabama

### **FCCLA Culinary Arts and Baking and Pastry Arts Competition**

February 7-8, 2025

(Weather date February 21-22)

Jefferson State Community College Culinary and Hospitality Institute  
Hoover, Alabama

### **ProStart Competition**

February 23-24, 2025

Perdido Beach Resort  
Orange Beach, AL



**Alabama's Junior Chef Competition 2025 (1).pdf**

[Download](#)

414.1 KB

---

# EDUCATION AND TRAINING



## New Education and Training Plan of Instruction Now Available

With the new course of study and textbooks approved, a committee was formed to work on the new Plans of Instruction for the Education and Training cluster. These teachers worked hard unpacking what the standards meant and then creating lessons plan ideas on how to implement the standards in a classroom setting. The wait is over! The POI's have been uploaded into Schoology. To access Schoology page, please refer to the instructions attached below.



**00 Schoology Group Instructions.pdf**

[Download](#)

231.6 KB

## New Education and Training STAR Event Now Available in Alabama

Last year, National FCCLA piloted Teaching Strategies in 5 states. This year Teaching Strategies is open to all states. Please see the attached documents for more information.



**Teaching Strategies.pdf**

[Download](#)

285.6 KB



**Teaching Strategies Lesson Plan Template.docx**

[Download](#)

26.0 KB

---

## Elevate Your Classroom

Calling all early childhood and elementary educators! Elevate's in-person professional development conference will be in Nashville on June 13th, 14th & 15th at the beautiful Gaylord Opryland Resort & Convention Center. Join us for multiple days of learning, networking, and inspiration to take your teaching to the next level.

Join Gerry Brooks, Kim Bearden, Greg Smedley-Warren, Jack Hartmann, and Mr. Ty (The Childcare Whisperer), along with many other amazing presenters who will bring you inspirational, research & evidence-based professional development like no other!

Get up close and personal with the keynotes and presenters, tons of free swag, downloadable resources, prizes, and a certificate of completion for sessions attended.

Don't miss out on this opportunity to grow and connect with fellow educators. Register now!

[#ElevateYourClassroom](#) [#Nashville2025](#) [#EducatorConference](#)  
[Registration Information](#)

---

## FCCLA UPDATES



---

## Registration for State Leadership Conference Is Open!

Many of you have been asking...now it's time. Registration for SLC 2025 is now open. See the conference registration guide in the FCCLA Adviser manual for details. Please also note that your chapter must be fully affiliated to register for conference.

Changes to the registration this year include:

- They system will ask for an approved purchase order if you are not paying by credit card
- There is a 3% fee for credit card payments (non-refundable)
- You will receive a link to book your lodging after registration has been submitted.

[SLC Registration Portal](#)

2025 State Leadership Conference Registration Rates <small>*To register, members and advisers must be affiliated with National FCCLA</small>	Early Bird Rate (non-refundable) October 1, 2024-December 1, 2025	Regular Rate (non-refundable) December 2, 2024-January 15, 2025	Late Rate (non-refundable) January 15, 2025-February 3, 2025
Full Conference Registration for affiliated members, advisers and chaperones.	\$45 per person	\$55 per person	\$65 per person
STAR Event Registration Fee	\$5 per person	\$10 per person	\$15 per person
School Administration/CTE Directors	\$0	\$0	\$0
Judges (no access to sessions)	\$0	\$0	\$0
Opening Session Tickets	\$15	\$20	\$25
Closing Session Tickets	\$15	\$20	\$25

**Additional Items available for purchase:**

- Conference T-shirt (\$10 small - X Large ++ for larger sizes)
- Disney Character Walk (\$5 per person, with profits going to state project)
- Disney Movie Night (\$5 per person includes movie, popcorn and drink with profits going to state project)

**Additional Activities (no charge, but must sign up in the registration portal)**

- Say Yes to FCS Signing Ceremony (for graduating seniors pursuing a degree in an FCS field)
- Fashion Show (open to members participating in either Fashion Design or Fashion Construction STAR Events)

**There will be no on-site registration  
Guest Tickets need to pre-ordered**



**Banner Parade Guidelines 25.pdf**

**Download**  
142.8 KB

## FCCLA Adviser Manual

- State Officer Team
- Calendar of Events
- Affiliation Information
- FCCLA Online Membership Step-by-Step Instructions**
- Accessing FCCLA



## Activities for Effective FCCLA Integration into Classroom Instruction

### Teach CTSO Resources

#### Alabama FCCLA and CTSO Events

- DISCOVER
- ACE
- JLDC

#### State Leadership Conference

- **Registration Guide**
- STAR Event Information
- STAR Events by the Number
- Competitive Events by Pathway
- Chapter Recognition Awards
- Adviser Awards

#### National Conferences and Events

The Adviser Manual was updated 9/30/24



**Adviser Manual 2024.pdf**

[Download](#)

6.3 MB

---

## Affiliation Help

Great news, affiliation rates stay the same for the 4th year!

# Alabama FCCLA Affiliation Rates 2024-25

Regular Membership: 12 minimum:  
\$9 National + \$6 State = \$15 total  
Advisers, national rate only

Up to 25 Package:  
National \$395 + State \$125 = \$520

- 25 student member national and state affiliations
  - Unlimited chapter adviser national affiliations in one chapter (this will only apply to chapters advisers in which the enrolled chapter is their primary chapter)
  - One (1) Adviser Academy Registration
  - One (1) National Program of your choice (electronic version)
  - One (1) Lifetime Alumni & Associates membership for any one of their choice
- \*\*Student members in excess of 25 will be charged the \$9 national affiliation rate plus the state affiliation rate.

Unlimited Members Package  
National \$775 + \$500 State = 1275

- Unlimited student member national and state affiliations in one chapter
- Unlimited chapter adviser national affiliations in one chapter (this will only apply to chapter advisers in which the enrolled chapter is their primary chapter)
- One (1) Adviser Academy Registration
- One (1) National Program of your choice (electronic version)
- One (1) Lifetime Alumni & Associates membership for any one of their choice

Middle School Unlimited Membership  
National \$250 + State \$250 = \$500

- Adviser pays National dues only \$9



2024-2025 Step-By-Step Affiliation Instructions.pdf

Download  
906.8 KB

## Membership Information Form

Entering each student's name by hand can be very time consuming. Below are links to a Microsoft form and a Google Form that will help with information about your members. **Be sure to make a copy of the form so you are the owner. Once you have your own copy, you can send the link to your members to complete. Data will come to you in a csv or excel document that can then be uploaded into your affiliation portal.** Otherwise, your information will come to Theresa instead of to you. And she doesn't need it :)

[Microsoft Membership Information Form](#) (updated link 9/13/24)

[Google Membership Information Form](#) (updated link 9/13/24)

---

Fundraiser Opportunities  
We Help Two Sock Fundraiser

FCCLA is excited to be partnering with We Help Two again this year!

Your chapter can run a funky sock or blanket fundraiser and make twice the difference this fall.

You can find all of the program info [HERE](#)



WeHelpTwo.pdf

Download

501.1 KB

## Funds for Orgs Shoe Fundraiser

### How it Works

The best part about this fundraising opportunity is that it's completely FREE for chapters and members. Funds2Orgs provides all the necessary resources for a successful campaign.

[Click herefor more information!](#)



Funds for Orgs Shoe Fundraiser.pdf

Download

330.6 KB

**Professional Development Opportunities**

The banner features the FCCLA logo on the left, which includes the text "FAMILY AND CONSUMER SCIENCES", "FCS ALABAMA", and "Educational and Training - Hospitality and Tourism - Human Services". On the right is a circular diagram with "FAMILY AND CONSUMER SCIENCES" at the center. The diagram is divided into several segments: "EMPLOYABILITY SKILLS", "LEADERSHIP DEVELOPMENT", "EDUCATION & HUMAN SERVICES", "HOSPITALITY & EVENT PRODUCTION", "HOSPITALITY & TOURISM", "CAREER AND COMMUNITY LEADERSHIP", "FAMILY AND CONSUMER SCIENCES", "VOCATIONAL & DESIGN", and "WORKPLACE SKILLS". The outer ring of the diagram lists "Applied Knowledge" and "Effective Relationships".

## FCCLA Chapter Adviser Summit

You are invited to attend the 2025 Chapter Adviser Summit being held January 15-18, 2025 in Orlando, FL! Don't miss this opportunity for professional development and to check out the 2025 National Leadership Conference location!

The FCCLA Chapter Adviser Summit (CAS) provides FCCLA Chapter Advisers with a wealth of professional development opportunities designed specifically for Family and Consumer Sciences education teachers looking to excel in the classroom and in FCCLA. The CAS is developed and led by FCCLA's National Staff and the National Consultant Team. Attendees will receive up-to-date

professional development training, share ideas, and network with other chapter advisers from across the nation.

Registration opens November 1, 2024.



**2025 CAS AAG (8-20-24).pdf**

[Download](#)  
201.0 KB

---

## FCCLA New Chapter Adviser Academy-Engage

The New Chapter Adviser Academy is designed for chapter advisers with 1-3 years of experience, offering guidance on starting and growing an FCCLA Chapter. The program features quarterly networking and mentoring sessions, support for integrating FCCLA programs into the classroom, and the development of a yearlong program of work. Advisers gain access to experienced mentors, resources for collaboration, and an understanding of FCCLA structures. Completion requires participation in at least three (3) of four (4) sessions, creating a program of work, and volunteering at regional, state, or local levels.

- Participants: Advisers who are in their first three years of teaching FCS or Advising FCCLA.
- Fee: Included as part of a membership package or \$45
- Requirements: Attend three (3) of the four (4) sessions to receive recognition for completion at NLC.

New Chapter Adviser Academy graduates will be recognized during the National Leadership Conference. They will also receive an FCCLA certificate of completion and two Continuing Education Units (CEU).

All sessions will be held at 7:00 PM ET on the dates listed in the information sheet below.

To register, you must be an affiliated adviser (or on a pending invoice) and ***register in the Meeting and Events section of the portal by November 1, 2024.*** For those not enrolled in Membership Packages, payment is due by **November 30, 2024.**



**2024-2025 Information Sheets - Adviser Academy 1.pdf**

[Download](#)  
258.1 KB

---

## FCCLA Adviser Academy 2.0: Excel

The Adviser 2.0 Academy is tailored for chapter advisers with four to five years of experience. The program offers quarterly sessions focused on new resources and opportunities with FCCLA, providing support and networking through discussions and breakout sessions. Participants enhance their skills in chapter management, share experiences, and develop a yearlong FCCLA program of work. Requirements include active participation in three (3) sessions and volunteering

at FCCLA events as a Competitive Events evaluator or lead consultant, workshop leader, or presenter.

- Participants: Advisers who are in their fourth through fifth years of teaching FCS or Advising FCCLA.
- Fee: Included as part of a membership package or \$45.
- Requirements: Attend three (3) of the four (4) sessions to receive recognition for completion at NLC.

All courses will be held at 6:00 PM ET on the dates listed in the information sheet below.

To register, you must be an affiliated adviser (or on a pending invoice) and ***register in the Meeting and Events section of the portal by November 1, 2024.*** For those not enrolled in Membership Packages, payment is due by **November 30, 2024.**



**2024-2025 Information Sheets -Adviser Academy 2.pdf**

[Download](#)  
218.1 KB

---

### **FCCLA Master Adviser Academy: Elite**

The Master Adviser Academy is available for advisers with five (5) or more years of experience. It offers opportunities to create Nearpod lessons, develop FCCLA college-level courses, align standards with FCS education, and contribute to Competitive Events case studies. Participants benefit from learning alongside experienced peers, enhancing their resumes with national contributions, and receiving recognition at the 2025 National Leadership Conference. Completion of the course requires contributing four resources, with an option for an honors designation by fulfilling additional requirements.

- Participants: Advisers who have been teaching FCS or advising FCCLA for more than five (5) years.
- Fee: Included as part of a membership package or register for \$45.
- Requirements: Attend three (3) of the four (4) sessions and complete three (3) items to receive recognition for completion at NLC.

All courses will be held at 6:00 PM ET on the dates listed in the information sheet below.

To register, you must be an affiliated adviser (or on a pending invoice) and ***register in the Meeting and Events section of the portal by November 1, 2024.*** For those not enrolled in Membership Packages, payment is due by **November 30, 2024.**



**2024-2025 Information Sheets - Elite\_0.pdf**

[Download](#)  
220.1 KB

---

## Alabama Affiliate of American Association of Family and Consumer Sciences

The Alabama Affiliate of AAFCS will hold its annual spring conference, April 9-11. Save the date for this professional development event! More details coming soon.

---



## American Association of Family and Consumer Sciences

High quality professional development and networking opportunities for members and non-members is at the core of the Annual Conference. The conference objectives help provide a framework for the content to be addressed at and included in the 2025 Annual Conference. Join AAFCS in Kansas City, MO June 25-28, 2025.

---

## ALSDE CTE SUMMER PROFESSIONAL DEVELOPMENT CONFERENCE 2025

Just announced! The 2025 ALSDE CTE Summer Professional Development Conference will take place July 23-25, 2025, at the Mobile Convention Center. Mark your calendars!

---



**Alabama Association of Family and Consumer Sciences**



**Dr. Bernice Richardson,  
President**

For more information, contact  
Dr. Richardson @  
[bernicerichardson175@gmail.com](mailto:bernicerichardson175@gmail.com)



**American Association of Family and Consumer Sciences**

Just a reminder that [Theresa](#) and [Kayla](#) are available for technical assistance visits to your school, phone or virtual platforms.



**Alabama Family and Consumer Sciences and FCCLA**



Instagram: [@alafccla](#)

Email: [fccla@alsde.edu](mailto:fccla@alsde.edu)

Website: [Alabama State Department of Education - Alabama](#)

[Achieves - ALSDE](#)

[Home - Alabama FCCLA](#)

Location: [50 North Ripley Street, Montgomery, AL, USA](#)

Phone: 334-694-4750

Facebook: <https://www.facebook.com/ALAFCCCLA/>

Instagram: [@alafccla](#)



**Alabama FCS/FCCLA**

Alabama is using Smore to create beautiful newsletters