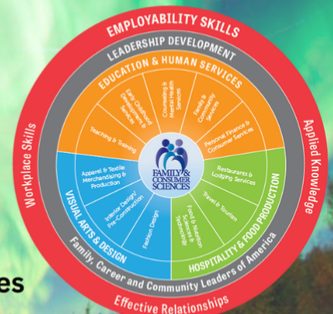


Alabama FCS Newsletter

November 13, 2024

Table of Contents

- Section 1: General FCS Information
- Section 2: Human Services
- Section 3: Visual Design
- Section 4: Hospitality and Tourism
- Section 5: Education and Training
- Section 6: FCCLA Updates
- Section 7: Professional Development Opportunities
- Section 8: Contact Us



Congratulations to all the Award Recipients and Outstanding Stars at the Annual Stars of the Industry Awards Dinner!

The Alabama Restaurant & Hospitality Association is thrilled to announce the successful conclusion of the Stars of the Industry Awards, which took place on October 28 at the Renaissance Montgomery Hotel & Spa. The event was a resounding success, with attendees and awardees coming together to celebrate excellence in restaurant and hospitality industry.

Educator of Excellence
Cindy Yates-Career Academies of Decatur

and to one of our valued industry partners

Tourism Promoter of the Year
Tami Reist

Farm to Table Catfish Professional Development

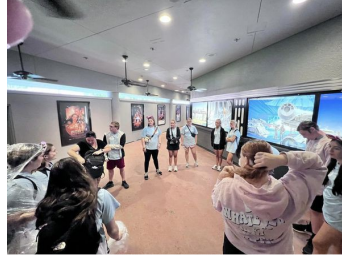


Alabama FCCLA and Alabama Farmers Federation sponsored a Catfish Farm to Table professional development for Alabama Family and Consumer Sciences teachers, October 24 in Greensboro, AL. Teachers learned about how farmers raise catfish from fingerlings to harvesting of fish and then to shipping and processing the fish. ***Pond to Plate*** they called it! It was a great day. A special thank you to William Green at the Farmers' Federation and the Kyser family for welcoming us to their farm. We were also treated to a fried catfish lunch from a local restaurant and heard from agents with the Alabama Catfish Association. We topped off our day with a cooking demonstration from Stacey Little of Southern Bites as he prepared blackened catfish tacos.



FCCLA Fall Leadership Institute

FCCLA offered two (2) new leadership training opportunities to affiliated members and advisers. FCCLA joined forces with the Disney Imagination Campus at both Anaheim and Orlando parks to offer Disney-led Leadership and Teamwork sessions within the Disney parks. This was a unique opportunity to learn valuable skills within a small group outside of the classroom experience. This pilot year went well, so fingers crossed it will be offered again!



Alabama FCCLA State Project



Alabama FCCLA is excited to kick off our State Service Project for this year! We will be fundraising for Make-A-Wish and working to grant a Wish Kid's wish. Our fundraising goal is \$10,000. We can easily meet and exceed this if every chapter raises at least \$100.

This ensures that Alabama FCCLA will be able to sponsor a full wish. However, please do not limit yourselves to just this amount as every dollar raised benefits a wish child. Fundraising efforts will be tracked through Make-A-Wish's Wish Your Way site. People can donate directly through your chapter's Wish Your Way page or your chapter members may collect offline donations by cash or check.



Make-A-Wish Sign Up Instructions.pdf

[Download](#)

42.1 KB

Another option to participate in our state project is to bring supplies to State Leadership Conference to donate to Children's Harbor. The mission of Children's Harbor is to strengthen families of seriously ill children through refuge, respite and resources. These unique, no-cost services are offered at both "The Harbor" Family Center located at Children's of Alabama in

Birmingham, and at the Lake Martin retreat facility in Alexander City. Children's Harbor has been in service since 1989. To find out more about the services and mission of Children's Harbor visit their website at [Children's Harbor - Serving Children With Serious Illnesses \(childrensharbor.com\)](http://Children's Harbor - Serving Children With Serious Illnesses (childrensharbor.com)).



A requested list of item donations can be found here [Item Donations | Children's Harbor \(childrensharbor.com\)](http://Item Donations | Children's Harbor (childrensharbor.com))

Two FCCLA blazers will be awarded at SLC. One for the most donations collected for Make a Wish and one for the most donations for Children's Harbor.

We Help Two Sock Fundraiser

With ***Socksgiving*** and ***Socks for the Season*** just around the corner, We Help Two would like to partner with you to sell socks to raise funds and earn socks to donate to people in need in your community.

You can also partner with them in the spring but between now and Christmas is the BEST time to sell socks to raise funds for your cause.

If you are looking for a fundraiser that has no upfront cost and gives you 50% of the profit, they've got you!

If you would like to know your next steps to get started, please fill out [this quick survey](#) and we can get you set up ASAP



Learning Blade

Learning Blade continues to be a FULLY FUNDED career awareness resource for ALL Alabama schools.

New in Learning Blade!

We're thrilled to announce that Learning Blade's new Alabama flyer is now available, showcasing an updated design to help you seamlessly integrate STEM, computer science, and career awareness

into your classroom!

Need an account? Sign up here: [LearningBlade.com/AL](https://learningblade.com/AL)

If you'd like to learn more, schedule FREE professional development at a time that works for you here: <https://calendly.com/d/3xc-4s3-99n>



Learning Blade.pdf

Download

217.3 KB



HUMAN SERVICES

EARLY CHILDHOOD
DEVELOPMENT SERVICES

CONSUMER SERVICES

FAMILY STUDIES AND COMMUNITY
SERVICES

FOOD, WELLNESS AND DIETETICS

November Cooking

November is Native American Heritage Month! It's a time to celebrate the rich cultures, histories, and contributions of Native American peoples. Let's honor their traditions by exploring their culinary heritage. Check out these delicious recipes to bring a taste of Native American culture to your kitchen!

[Corn Fritters](#)

[Poyha](#)

[Navajo Fry Bread](#)

[November Baking Calendar](#)

November 8: Parents as Teachers Day

November 17: Homemade Bread Day

November 21: National Gingerbread Day

November 23: Eat a Cranberry Day

November 28: Thanksgiving



FASHION

INTERIOR DESIGN

VISUAL DESIGN



Empire Waist

Empire Waist

Lenore Miller is a plus size, insecure teen whose talent for fashion is discovered by her confident, plus-sized classmate, forcing her into the spotlight-and into the path of both bullies and new friends. But her image-conscious mother's fears and Lenore's own deep self-loathing prevent her from wearing her own designs. Will Lenore ever feel the self-love she inspires in others?

From the Empire Waist website:

Empire Waist has always been more than a movie for us. That's why we created the Empire Waist Confidence Curriculum – a free and vetted resource on body image and self-confidence made for tweens, teens, and adults to process questions and feelings raised by the film. Created in partnership with Gillette Venus, these 7 videos and 15 downloadable activities include personal interviews with our actors, tools from trusted health experts, and activities for audience members to work through their own journeys of self-worth. Available September 27th, 2024! The movie is available for rental or purchase on Prime Video.

[Curriculum Website](#)

EMPIRE WAIST - Official Trailer



OFFICIAL TRAILER



HOSPITALITY AND TOURISM

FOOD AND BEVERAGE SERVICES

LODGING

SPORTS, RECREATION AND
ATTRACTIONS

TRAVEL AND TOURISM

FCCLA Chef Works

The new Chef Works 2024 flyer includes some new products while keeping core items at last year's pricing. The Essential coat is offered to FCCLA schools for \$11.95 (retail \$24.00). Please see the attached flyer for more details.

How to order:

Email: Schools@chefworks.com

Visit the website - <https://www.chefworks.com/culinaryeducation>



School_Culinary Insitute_Flyer PROT 20240801.pdf

Download

791.6 KB

Hospitality and Tourism Plans of Instruction

With the new course of study and textbooks approved, a committee was formed to work on the new Plans of Instruction for the Hospitality and Tourism cluster. These teachers worked hard unpacking what the standards meant and then creating lessons plan ideas on how to implement the standards in a classroom setting. The wait is over! The POI's have been uploaded into Schoology. To access Schoology page, please refer to the instructions attached below.



00 Schoology Group Instructions.pdf

Download

231.6 KB

Culinary Competitions

CNP Jr. Chef Competition

January 17, 2025

Jefferson State Community College Culinary and Hospitality Institute
Hoover, Alabama

FCCLA Culinary Arts and Baking and Pastry Arts Competition

February 7-8, 2025

(Weather date February 21-22)

Jefferson State Community College Culinary and Hospitality Institute
Hoover, Alabama

ProStart Competition

February 23-24, 2025

Perdido Beach Resort
Orange Beach, AL



Alabama's Junior Chef Competition 2025 (1).pdf

[Download](#)
414.1 KB



Culinary Arts STAR Event Recipe Packet.pdf

[Download](#)
140.2 KB



Bakery and Pastry Arts Menu 2025.pdf

[Download](#)
229.6 KB

EARLY CHILDHOOD EDUCATION

EDUCATORS IN TRAINING

**EDUCATION AND
TRAINING**



New Education and Training Plans of Instruction

With the new course of study and textbooks approved, a committee was formed to work on the new Plans of Instruction for the Education and Training cluster. These teachers worked hard unpacking what the standards meant and then creating lessons plan ideas on how to implement the standards in a classroom setting. The wait is over! The POI's have been uploaded into Schoology. To access Schoology page, please refer to the instructions attached below.



00 Schoology Group Instructions.pdf

[Download](#)

231.6 KB

New Education and Training STAR Event Now Available in Alabama

Last year, National FCCLA piloted Teaching Strategies in 5 states. This year Teaching Strategies is open to all states. Please see the attached documents for more information.



Teaching Strategies.pdf

[Download](#)

285.6 KB



Teaching Strategies Lesson Plan Template.docx

[Download](#)

26.0 KB

Elevate Your Classroom

Calling all early childhood and elementary educators! Elevate's in-person professional development conference will be in Nashville on June 13th, 14th & 15th at the beautiful Gaylord Opryland Resort & Convention Center. Join us for multiple days of learning, networking, and inspiration to take your teaching to the next level.

Join Gerry Brooks, Kim Bearden, Greg Smedley-Warren, Jack Hartmann, and Mr. Ty (The Childcare Whisperer), along with many other amazing presenters who will bring you inspirational, research & evidence-based professional development like no other!

Get up close and personal with the keynotes and presenters, tons of free swag, downloadable resources, prizes, and a certificate of completion for sessions attended.

Don't miss out on this opportunity to grow and connect with fellow educators. Register now!

[#ElevateYourClassroom](#) [#Nashville2025](#) [#EducatorConference](#)

[Registration Information](#)

FCCLA UPDATES



JLDC and ACE photos can be seen [here](#).

Registration for State Leadership Conference Is Open!

Many of you have been asking...now it's time. Registration for SLC 2025 is now open. See the conference registration guide in the FCCLA Adviser manual for details. Please also note that your chapter must be fully affiliated to register for conference.

Changes to the registration this year include:

- They system will ask for an approved purchase order if you are not paying by credit card
- There is a 3% fee for credit card payments (non-refundable)
- You will receive a link to book your lodging after registration has been submitted.

[SLC Registration Portal](#)

2025 State Leadership Conference Registration Rates <small>*To register, members and advisers must be affiliated with National FCCLA</small>	Early Bird Rate (non-refundable) October 1, 2024-December 1, 2025	Regular Rate (non-refundable) December 2, 2024-January 15, 2025	Late Rate (non-refundable) January 15, 2025-February 3, 2025
Full Conference Registration for affiliated members, advisers and chaperones.	\$45 per person	\$55 per person	\$65 per person
STAR Event Registration Fee	\$5 per person	\$10 per person	\$15 per person
School Administration/CTE Directors	\$0	\$0	\$0
Judges (no access to sessions)	\$0	\$0	\$0
Opening Session Tickets	\$15	\$20	\$25
Closing Session Tickets	\$15	\$20	\$25

Additional Items available for purchase:

- Conference T-shirt (\$10 small - X Large ++ for larger sizes)
- Disney Character Walk (\$5 per person, with profits going to state project)
- Disney Movie Night (\$5 per person includes movie, popcorn and drink with profits going to state project)

Additional Activities (no charge, but must sign up in the registration portal)

- Say Yes to FCS Signing Ceremony (for graduating seniors pursuing a degree in an FCS field)
- Fashion Show (open to members participating in either Fashion Design or Fashion Construction STAR Events)

**There will be no on-site registration
Guest Tickets need to pre-ordered**



Banner Parade Guidelines 25.pdf

[Download](#)

142.8 KB

FCCLA Adviser Manual

State Officer Team

Calendar of Events

Affiliation Information

FCCLA Online Membership Step-by-Step Instructions

Accessing FCCLA

Activities for Effective FCCLA Integration into Classroom Instruction

Teach CTSO Resources

Alabama FCCLA and CTSO Events

- DISCOVER
- ACE
- JLDC

State Leadership Conference

- **Registration Guide**
- STAR Event Information
- STAR Events by the Number
- Competitive Events by Pathway
- Chapter Recognition Awards
- Adviser Awards

National Conferences and Events

The Adviser Manual was updated 9/30/24



Adviser Manual 2024.pdf

[Download](#)

6.3 MB

Chapter Project Awards

Our state chapter awards have been updated and now include the scoring rubric. Please see the updated projects and submission information in the documents below.



A Prescription to Healthy Living State Project.pdf

[Download](#)

106.7 KB



Children-First-State-Project and Rubric.pdf

[Download](#)

110.2 KB



Focus-on-Alabama-State-Project.pdf

[Download](#)

113.2 KB

And our brand-new State Project!! Inspire to Educate!



Inspire to Educate State Project.pdf

Download

109.7 KB

Alabama FCCLA Bylaw Change Application

Proposed revisions or additional bylaws of the Alabama Association of Family, Career and Community Leaders of America may be submitted in writing to the State Executive Council by any chapter, state adviser, or member of the State Executive Council. The State Executive Council shall review and assemble the proposed revisions or additional bylaws. Revisions or additional bylaws may be approved by a two-thirds vote of affiliated chapters by mail-in ballot. Copies of the proposed bylaws shall be sent to chapters one month prior to voting.

Any form not completely filled out will not be considered by the Executive Council.

Bylaw [Application](#) due by January 1, 2025.



Professional Development Opportunities



FCCLA Chapter Adviser Summit

You are invited to attend the 2025 Chapter Adviser Summit being held January 15-18, 2025 in Orlando, FL! Don't miss this opportunity for professional development and to check out the 2025 National Leadership Conference location!

The FCCLA Chapter Adviser Summit (CAS) provides FCCLA Chapter Advisers with a wealth of professional development opportunities designed specifically for Family and Consumer Sciences education teachers looking to excel in the classroom and in FCCLA. The CAS is developed and led by FCCLA's National Staff and the National Consultant Team. Attendees will receive up-to-date professional development training, share ideas, and network with other chapter advisers from across the nation.

Registration opens November 1, 2024.



2025 CAS AAG (8-20-24).pdf

Download
201.0 KB

Alabama Affiliate of American Association of Family and Consumer Sciences

The Alabama Affiliate of AAFCS will hold it's annual spring conference, April 9-11. Save the date for this professional development event! More details coming soon.



American Association of Family and Consumer Sciences

High quality professional development and networking opportunities for members and non-members is at the core of the Annual Conference. The conference objectives help provide a framework for the content to be addressed at and included in the 2025 Annual Conference. Join AAFCS in Kansas City, MO June 25-28, 2025.

ALSDE CTE SUMMER PROFESSIONAL DEVELOPMENT CONFERENCE 2025

The 2025 ALSDE CTE Summer Professional Development Conference will take place July 23-25, 2025, at the Mobile Convention Center. Mark your calendars!



**Alabama Association of
Family and Consumer
Sciences**



**Dr. Bernice Richardson,
President**

For more information, contact
Dr. Richardson @
bernicerichardson175@gmail.com



**American Association of
Family and Consumer
Sciences**

Just a reminder that [Theresa](#) and [Kayla](#) are available for technical assistance visits to your school, phone or virtual platforms.



Alabama Family and Consumer Sciences and FCCLA

Instagram: [@alafccla](#)

Email: fccla@alsde.edu

Website: [Alabama State Department of Education - Alabama](#)

[Achieves - ALSDE](#)

[Home - Alabama FCCLA](#)

Location: [50 North Ripley Street, Montgomery, AL, USA](#)

Phone: 334-694-4750

Facebook: <https://www.facebook.com/ALAFCCLA/>

Instagram: [@alafccla](#)



Alabama FCS/FCCLA

Alabama is using Smore to create beautiful newsletters

